

# WINEGARD® CARRYOUT®

automatic portable satellite antenna

## Quick Start Guide

Before using your Carryout for the first time, there may be some initial steps required to set up your Carryout for use with your receiver. This is a one-time process. Follow the steps here for a typical installation. If you have any additional questions, consult our full Users Manual.



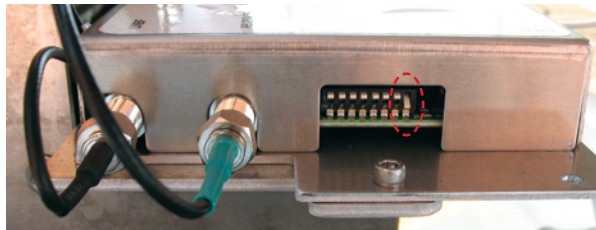
## 1) Programming the Carryout

The Carryout comes factory pre-set for DIRECTV®. DISH Network® users follow the steps shown below. DIRECTV users can skip to [Wiring the Carryout](#).

First you'll need to identify the electronics box on the Carryout. After removing the dome, you will find the main electronics housing located directly behind the reflector.



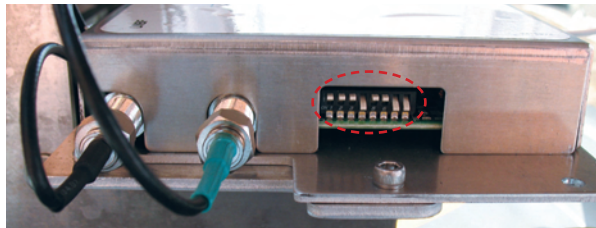
On the side of the electronics board, you will see the **Dip-Switches** that control what Service Provider the Carryout is set for. It is factory pre-set for DIRECTV with the **8th switch down**.



Factory pre-set for DIRECTV



To set for DISH Network, push the **4th and 7th switches down**, and leave the **8th down**.

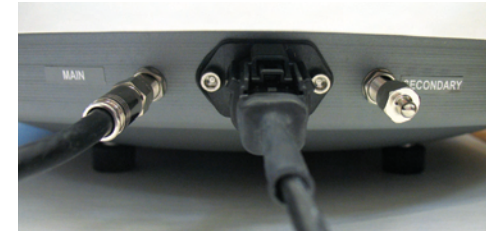


DISH Network settings

There are additional switch options shown in the Carryout manual for alternate DISH Network settings or Bell TV™ settings.

## 2) Wiring the Carryout

Connect the supplied Power Cable and Coaxial Cable to the Carryout as shown here.



The Coaxial Cable needs to run **DIRECTLY** to the **Satellite In** port on the back of the Satellite Receiver. If wiring through a wall plate on the side of the coach, consult [Using Outside Receptacle](#) steps on back.



The Power plug needs to be connected to a 12V power source



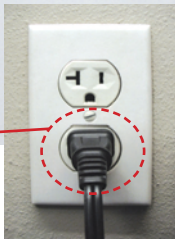
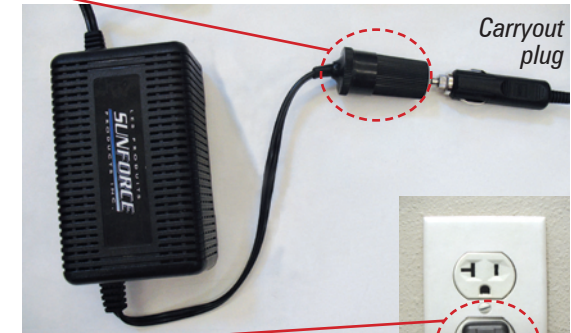
- or -

connect to an AC to DC power converter (like GM-1200 below).



Then plug converter into 110V outlet.

If using a Power Converter, it must be able to supply up to 5 amps of current.



**Before plugging in power, be sure that your satellite receiver is setup for use with the Carryout, as shown inside this guide.**



# DISH Network Receiver Setup



**BEFORE** turning the Carryout on, you'll need to follow the steps below to clear out any existing receiver settings.

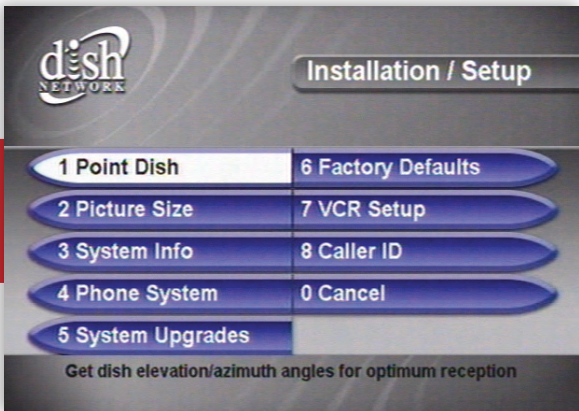
Press **Menu** on your remote. Select option 6 **System Setup**.



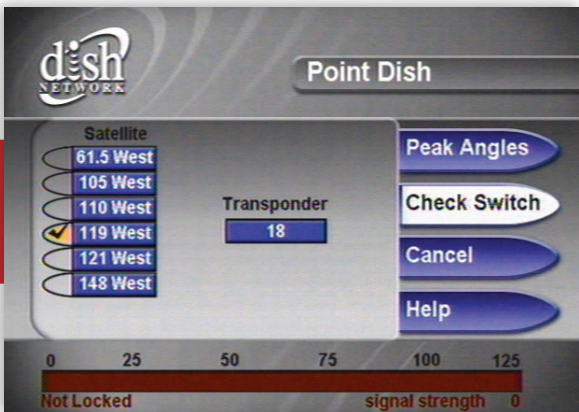
Select option 1 **Installation**.



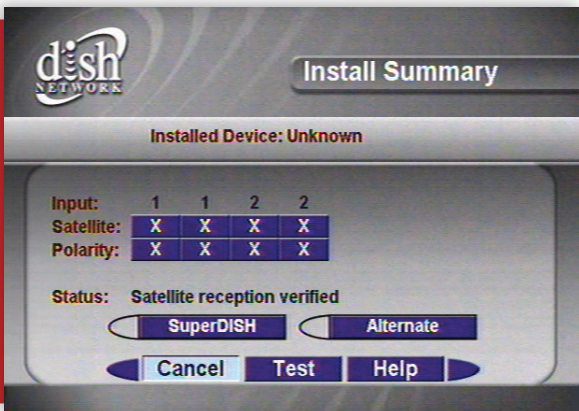
Select option 1 **Point Dish**.



Move over to select **Check Switch**.

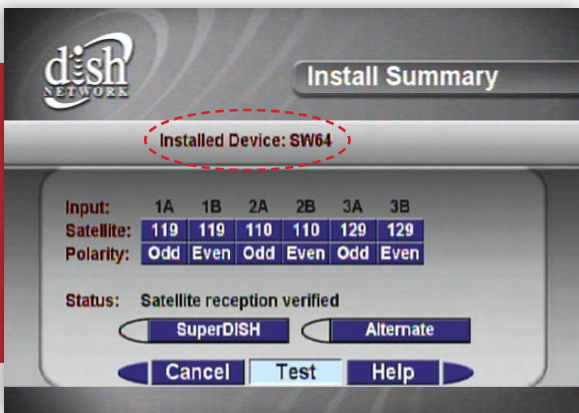


With the Carryout still turned off, select **Test**. It will go through a number of steps, then return to the screen shown here with previous information cleared. If at any point it asks you to save, select **Save** or **Yes**.



Now **turn on** the Carryout. Allow it 3-4 minutes to acquire satellites.

Next, select **Test** again. This time it will install the proper switch for use with the Carryout. Once the steps are complete you will see something similar to what is shown to the right.



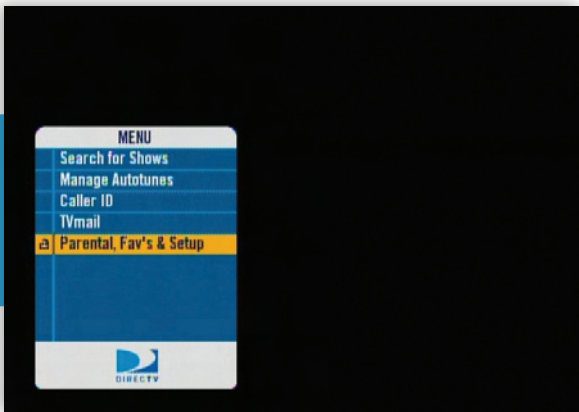
When you see the SW64 as the Installed Switch, your Carryout is ready for use.

# DIRECTV Receiver Setup

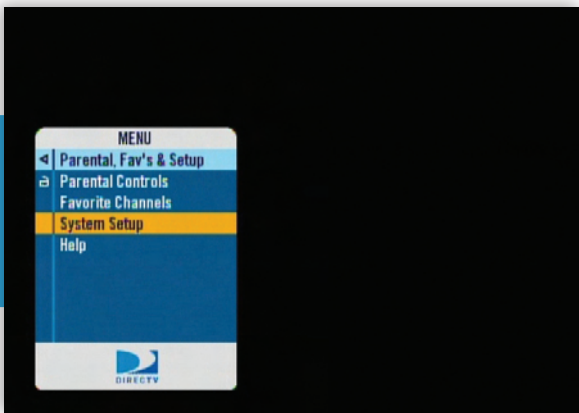


**Plug in the Carryout and allow it a few minutes to acquire the satellites, then follow the steps shown below.**

The wording and look used in your receiver may differ slightly.



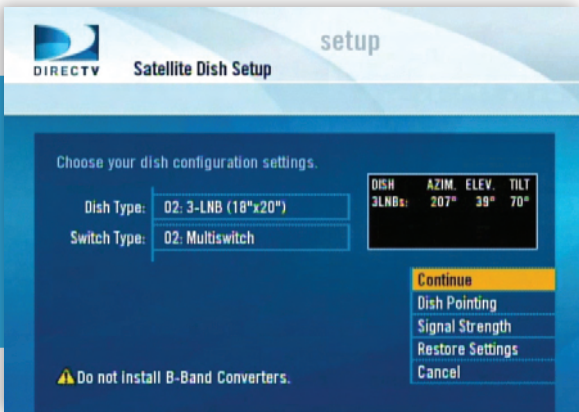
In your receiver's Menu, you will need to identify the **Satellite** Menu.



The Satellite Menu will have an option for **Satellite Setup**.



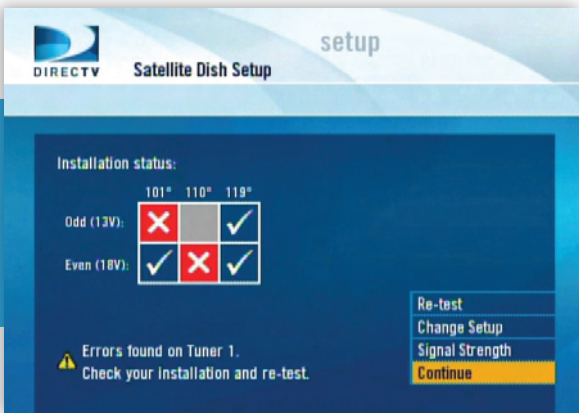
Select the option for **3 LNBs** or **3 Satellites**. If given the option of SWM or Multiswitch, select **Multiswitch**.



In the last step, it will verify your setup.



You may see errors for certain satellites during this step, but that is normal.



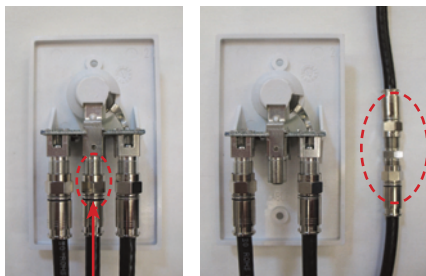


# Using Outside Receptacle

**TIP:** If you are having problems, connect the Carryout coaxial cable directly to the receiver by running it through your RV door first to ensure it is running properly.

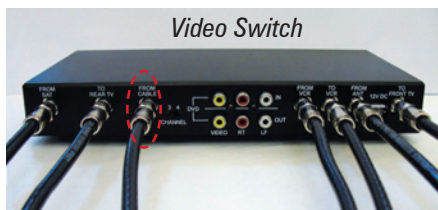
If your outside TV receptacle is wired for **satellite**, you'll need to locate where that receptacle leads and connect that directly to your satellite receiver.

If the outside TV receptacle is wired for **cable**, the wiring will have to be modified for use with satellite. The coaxial cable cannot run through any other devices or switches **BEFORE** the satellite receiver.



Cable

Typically, if wired for cable the wiring will either run through a Winegard Power Supply or Video Switch. The easiest way to fix this is to disconnect the cable from that device, use a barrel connector, and connect a new cable that runs directly to the receiver, bypassing the Power Supply or Video Switch.



Video Switch



Video Switch

[www.winegard.com](http://www.winegard.com)

Technical Service: 800-788-4417



**WINEGARD®**

Winegard Company • 3000 Kirkwood St. • Burlington, IA 52601-2000  
800/788-4417 • FAX 319/754-0787 • [www.winegard.com](http://www.winegard.com)

Printed in U.S.A. © Winegard Company 2010 2452201

Winegard and Carryout are registered trademarks of Winegard Company. DISH Network is a registered trademark of EchoStar Satellite L.L.C. DIRECTV is a registered trademark of DIRECTV, Inc., a unit of Hughes Electronics Corp. Bell TV is a registered trademark of Bell Canada, Inc.