

**BX2258**

## 2012-13 Honda CR-V Installation Instructions

Serial Number

**Attachment Tab Height: 15-1/2"****Attachment Tab Width: 24"**

**Please read BOTH these Installation Instructions and the General Instructions prior to installing or operating this equipment.**

1. Blue Ox® towing products and accessories are intended to be installed by Blue Ox® Dealers who are familiar with our products and have the equipment and knowledge necessary to do "fit work". If needed, Blue Ox® Dealers can be found at [www.blueox.com](http://www.blueox.com) or by contacting our Customer Care Department at (402) 385-3051.
2. Many Blue Ox® baseplates are designed to use existing holes and hardware to mount the baseplate to the towed vehicle. Even though bolts are there, do not assume they are adequate for baseplate mounting. Always use the hardware supplied in the hardware kit and existing hardware as specified in the installation instructions.



If the front of your vehicle looks different than this, please contact us at (402)385-3051.

**Reference your vehicle owner's manual for manufacturer's towing specifications.**

### Bolt Torque Specifications

Torque in Foot-Pounds for Metric Bolts

Bolt Size	Grade 8.8	Grade 10.9
6MM	6	8
8MM	16	22
10MM	31	40
12MM	54	70
14MM	89	117

### Bolt Torque Specifications

Torque in Foot-Pounds for Inch Bolts

Bolt Size	Grade 5	Grade 8
1/4"	10	14
5/16"	19	29
3/8"	33	47
7/16"	54	78
1/2"	78	119
5/8"	154	230



## WARNING

Failure to read and follow these instructions could result in separation of the towed vehicle from the tow bar, causing property damage, loss of towed vehicle, personal injury or death.

BX2258  
2012-13 Honda CR-V  
Installation Instructions

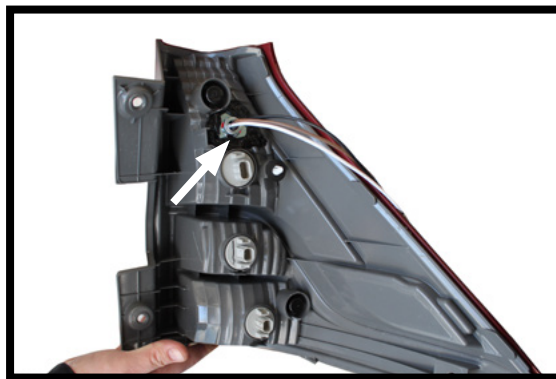
**Removable Tabs:** Due to the design of the removable tabs, the RangeFinderII tow bar can not be used. Adapters, except the BX8833 and BX88151, can not be used with this baseplate.

**Instruction Notes:** The fascia, coolant line and temperature sensor are removed and reinstalled for the baseplate installation. Some drilling and trimming is required.

Place all components that are removed on a flat, sturdy surface. All items will be reinstalled unless otherwise noted after the baseplate is installed.

The dimensional variations between otherwise identical vehicles can be considerable. While the baseplate was designed for easy installation, it may be necessary to tailor the baseplate slightly to compensate for vehicle manufacturer's tolerances.

The BX8869 Tail Light Wiring Kit is recommended for this vehicle.



Drill a hole according to the tail  
light wiring kit instructions.

**NOTICE**

- Handling of some cosmetic parts when installing this product may require the use of protective covers, rags, specialty tools, etc. to prevent damage.
- When using power drills be aware of the dangers of torque and drill bit length.
- When using a reciprocating saw be aware of objects behind the cutting surface.
- Use a good quality paint to spray cut edges of frame to prevent rusting.
- Be sure that **ALL** electrical connections are plugged in and accessories are functioning properly before reinstalling the fascia.
- Do not use the towed vehicle for storing luggage, equipment, etc. This may cause you to exceed the towing capacity of the tow bar, baseplate and its accessories.
- Be sure to use Loctite® Red on all bolts before tightening. Tighten all bolts according to the torque chart provided.
- Dealer or installer be certain the user receives these instruction sheet.

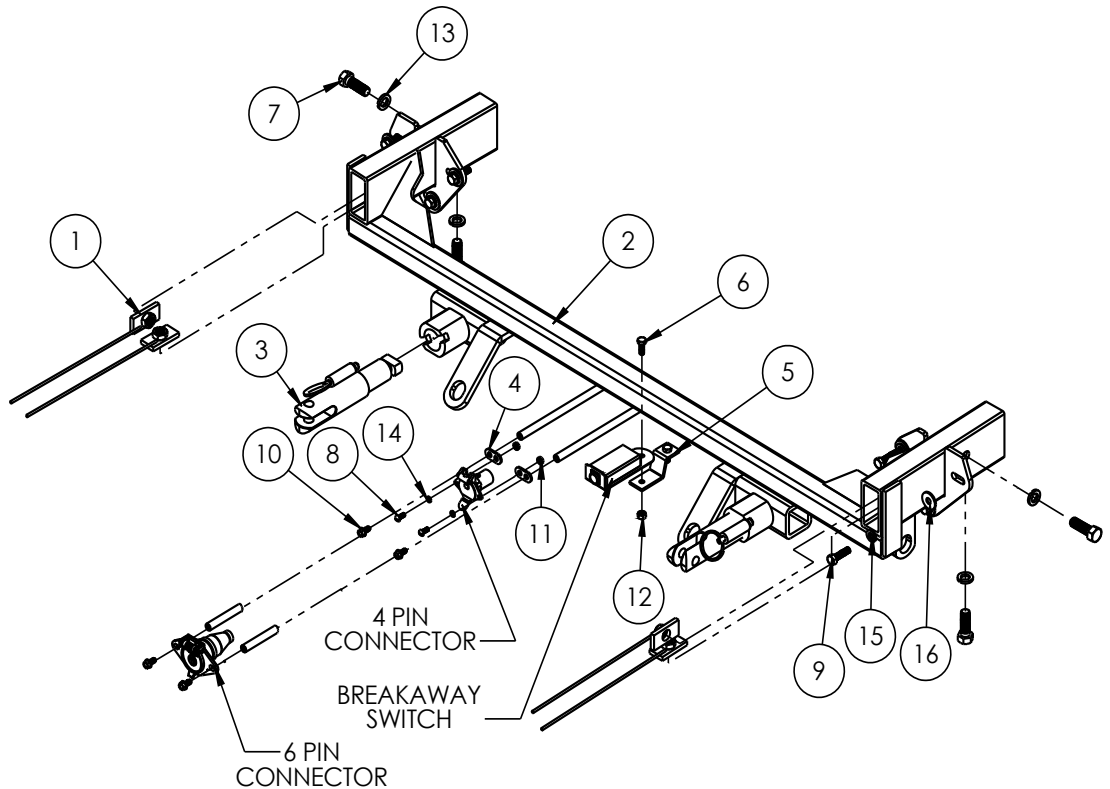
# BX2258

## 2012-13 Honda CR-V

### Installation Instructions

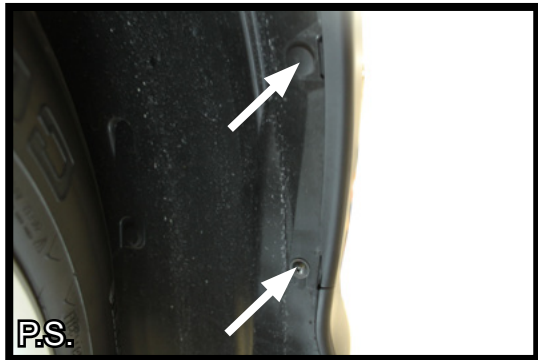
#### **Tools Required**

Large Vise Grip  
 Flat Screwdriver  
 Utility Knife  
 Phillips Screwdriver  
 Torque Wrench  
 Drill  
 Tape Measure  
 Loctite® RED  
 10MM Socket  
 12MM Socket  
 13MM Socket  
 3/4" Socket



Item No.	Part No.	Description	Qty.
1.....	61-4604 .....	1/2"-13 Nut Plate with 10" Wire.....	4
2.....	61-7002 .....	BX2258 Baseplate .....	1
3.....	62-3468 .....	Attachment Tab Assembly with Hole.....	2
4.....	101-5822 .....	4 Way Connector Adapter .....	2
5.....	102-7195 .....	Breakaway Bracket.....	1
6.....	201-0050 .....	1/4"-20 x 3/4" Hex Head Bolt, Grade 5, ZP.....	2
7.....	201-0051 .....	1/2"-13 x 1-1/2" Hex Head Bolt, Grade 5, ZP.....	4
8.....	201-0192 .....	#10-32 1/2" Round Slotted Head Screw .....	2
9.....	201-0446 .....	8MM-1.25 x 30MM Hex Bolt, Grade 8.8, ZP .....	6
10.....	201-0553 .....	1/4"-20 x 1/2" Self Tapping Screw, ZP .....	2
11.....	202-0047 .....	#10-32 Hex Nut.....	2
12.....	202-0102 .....	1/4"-20 Hex Nylon Nut, ZP.....	2
13.....	203-0012 .....	1/2" Lock Washer, ZP.....	4
14.....	203-0054 .....	#10 Lock Washer .....	2
15.....	203-0102 .....	8MM Lock Washer, ZP .....	6
16.....	203-0002 .....	5/16" Flat Washer, ZP .....	6
17(not shown).....	203-0005 .....	1/2" Flat Washer, ZP .....	4
18 (not shown).....	226-0046 .....	36" Class III Baseplate Safety Cable .....	2
19 (not shown).....	229-0359 .....	3/8" Quicklink , ZP.....	2
20 (not shown).....	290-0159 .....	13" Nylon Cable Tie .....	1
21 (not shown).....	290-0437 .....	Black Cap Plug Receiver .....	2
22 (not provided) .....	293-1336 .....	Breakaway Switch.....	1
23 (not provided) .....	294-0805 .....	4 Pin Connector .....	1
24 (not provided) .....	294-0902 .....	6 Pin Connector .....	1

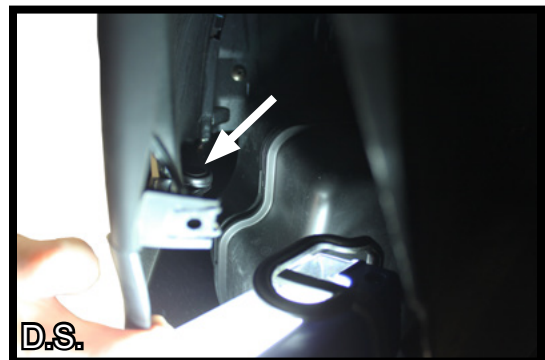
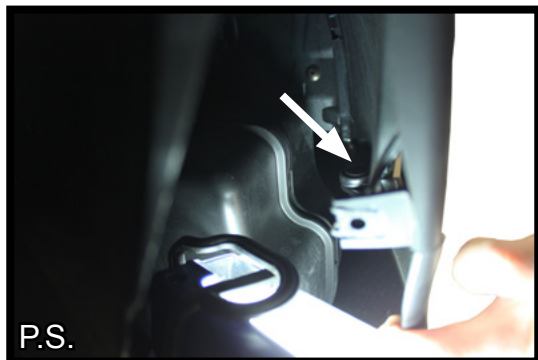
BX2258  
2012-13 Honda CR-V  
Installation Instructions



1. Using a Phillips screwdriver remove the screw at the bottom of the wheel well area. There are two (2) push pins that will need to be removed in this area also. Both are located above the screw.

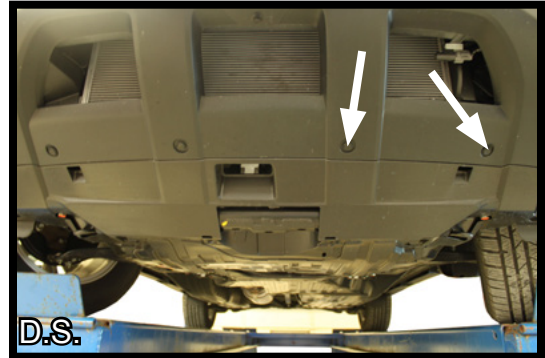
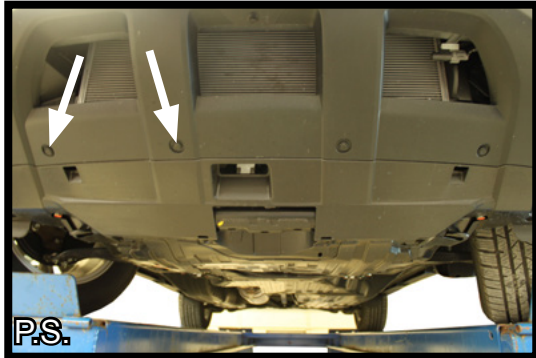


2. Remove the one (1) screw and one (1) push pin that are on the under side of the vehicle, right ahead of the front tire.



3. Gently pull the wheel well liner back. Remove the push pin that is located along the lower, outside edge.

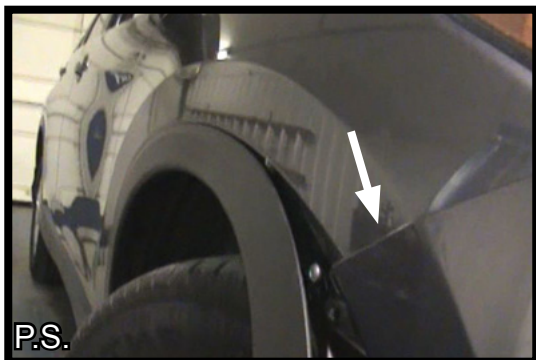
BX2258  
2012-13 Honda CR-V  
Installation Instructions



4. Remove the four (4) push pins that are located under the vehicle. There are two (2) on the passenger's side and two (2) on the driver's side.



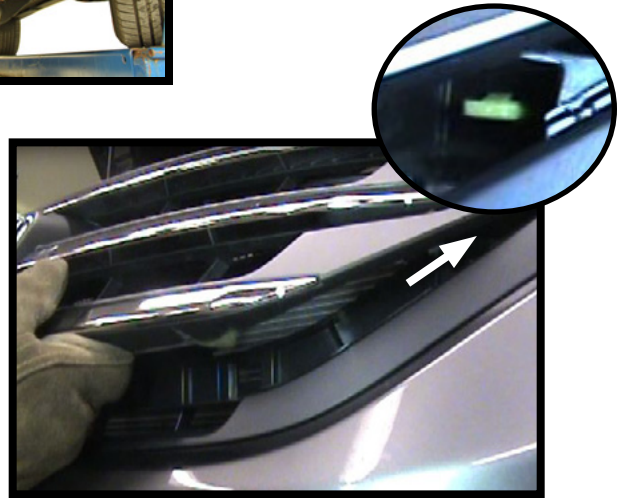
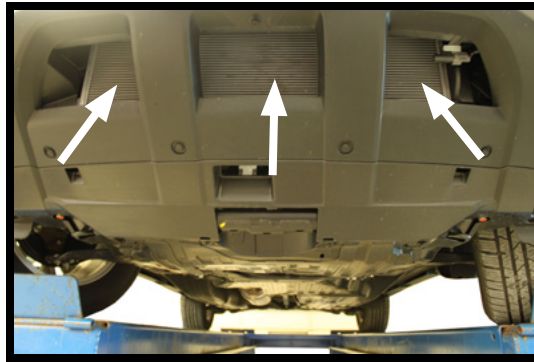
5. Carefully pry the wheel well trim back slightly. With a Phillips screwdriver remove the one (1) screw that is located towards the top portion of the wheel well.



6. Pull the fascia up and outward to loosen from the wheel wells. Apply slight pressure as this does not pull away easily.

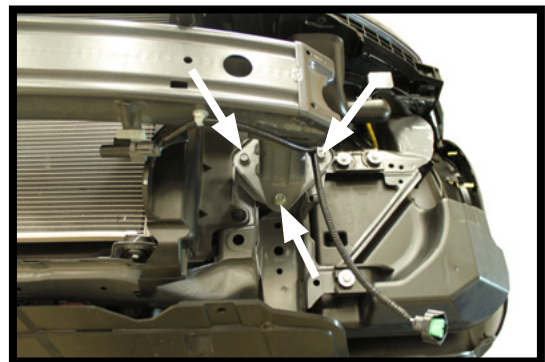
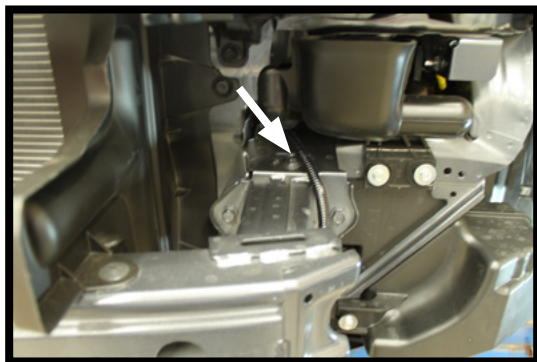


BX2258  
2012-13 Honda CR-V  
Installation Instructions



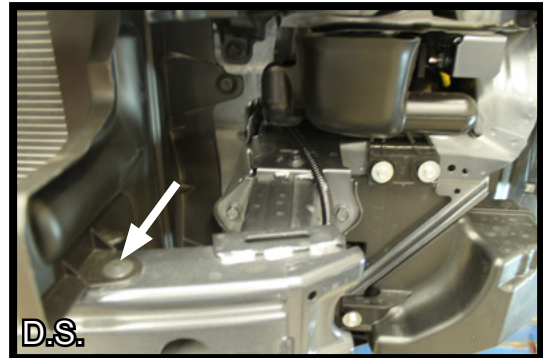
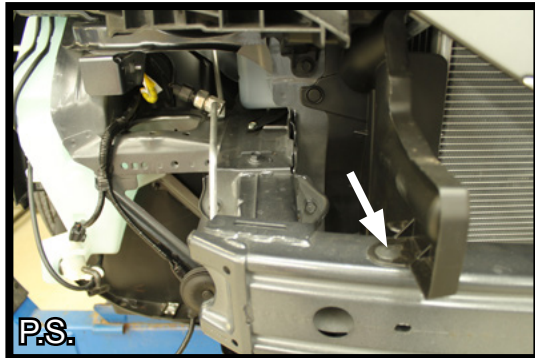
7. Looking from underneath the vehicle and toward the bumper to visually locate the four (4) yellow clips two (2) on either side of the vehicle. From the front of the vehicle reach up into the openings and unhook these four (4) clips by releasing the top, bottom and sides of each clip, while maintaining slight outward pressure on top of the fascia.

After the clips are released, reach up thru the grill opening and pull out the grill slightly to release the clips behind. To do this, push down on the clip while pulling out on the fascia. Repeat on the other side of the vehicle. Carefully remove the fascia from the vehicle.

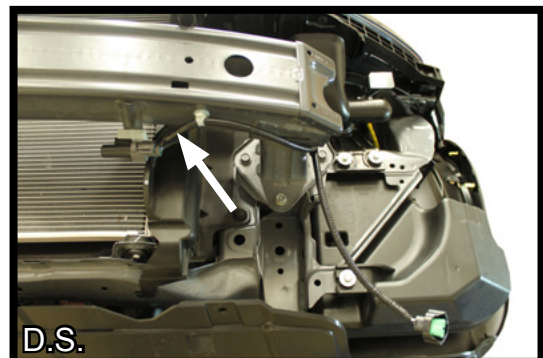
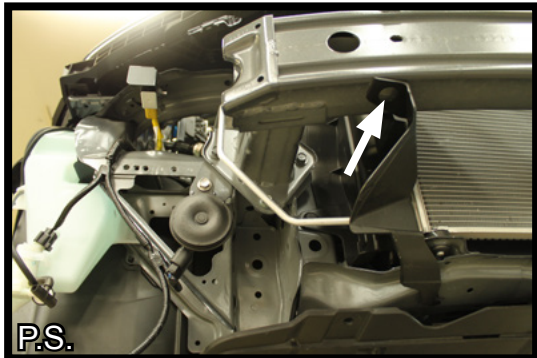


8. Using a 12MM socket, remove the four (4) bolts on the bumper core. There is one (1) on the top, one (1) on each side and one (1) on the bottom. Do this on both the sides of the vehicle.

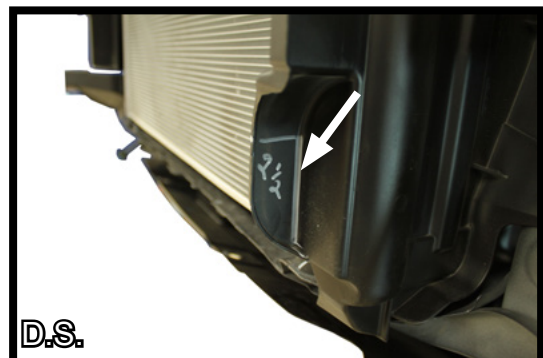
BX2258  
2012-13 Honda CR-V  
Installation Instructions



9. Using a flat screwdriver, remove the screw located on the top, outer edge of the bumper core. The bumper core will not get reinstalled.



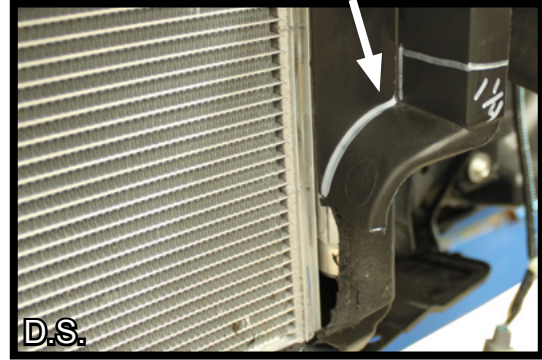
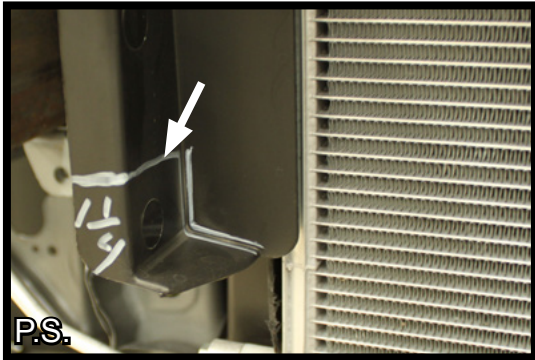
10. On the passenger side, remove the screw on the bottom, outer edge of the bumper core. On the driver side, the temperature sensor will need to be temporarily removed by releasing the push pins. It will be relocated once the baseplate installation is complete.



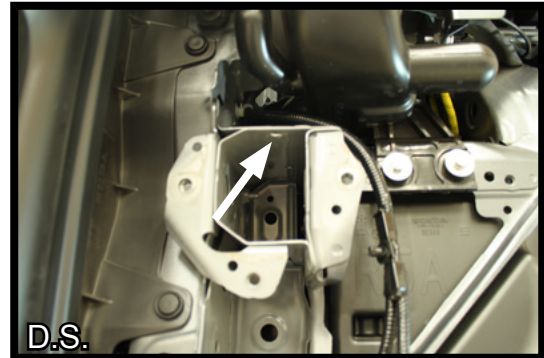
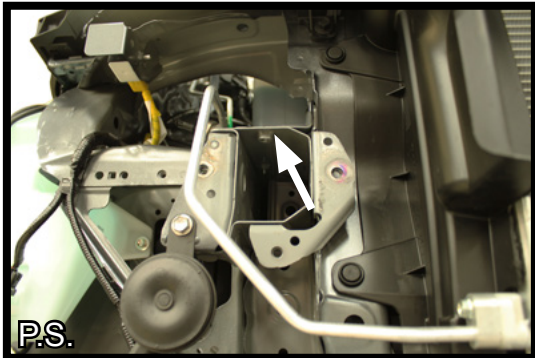
11. On the passenger side, cut straight down to remove the bottom portion. On the driver side, notch up 2-1/2" and straight out.



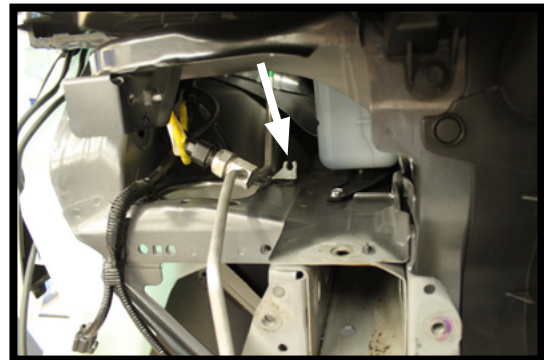
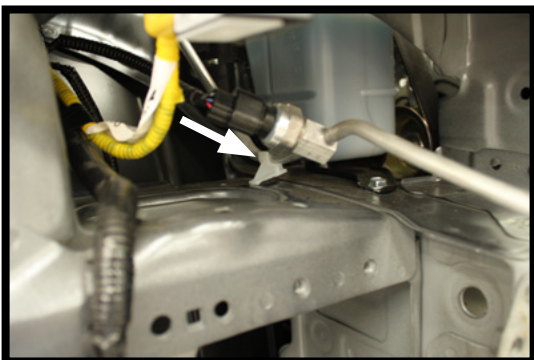
BX2258  
2012-13 Honda CR-V  
Installation Instructions



12. Additional cutting is required on the rubber mounts located next to the radiator. Mark each per image above and notch accordingly.



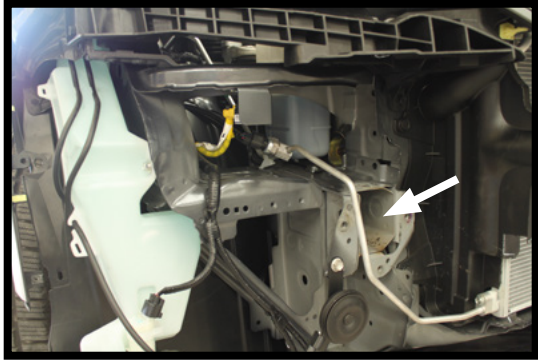
13. Using a chisel, remove the nut in order to slide the baseplate in.



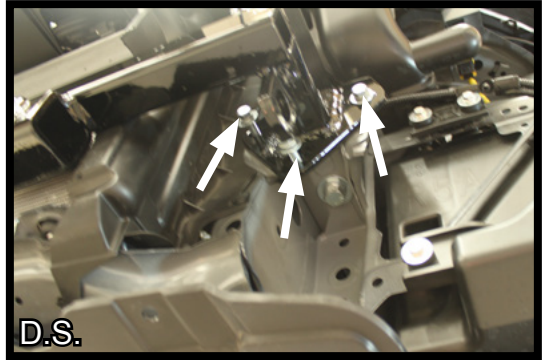
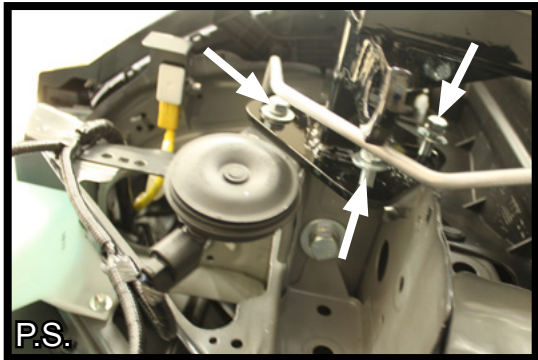
14. On the passenger side snap the coolant line out of the bracket and carefully move over and out of the way.



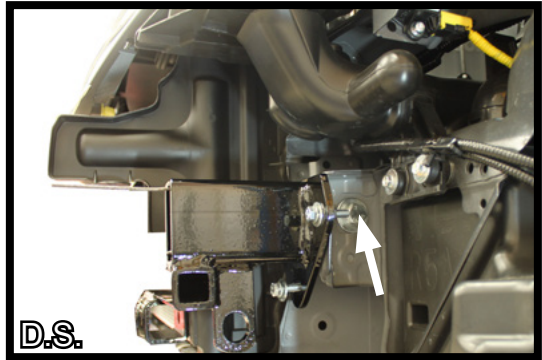
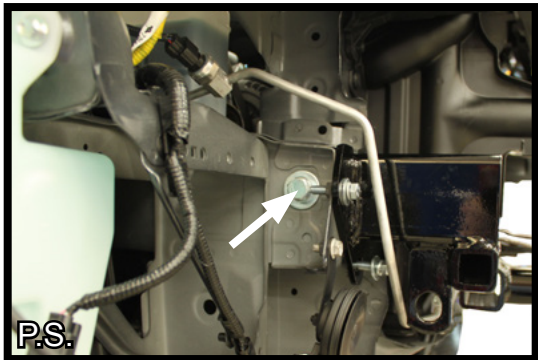
BX2258  
2012-13 Honda CR-V  
Installation Instructions



15. Slide the tubes of the baseplate assembly into the rectangular tube on the vehicle frame.

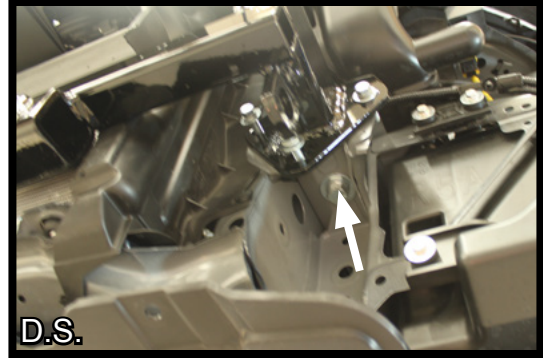
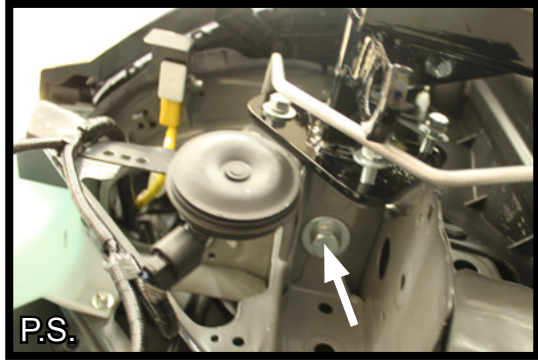


16. Align the bolt holes. Insert the three (3) 8MM-1.25 x 30MM bolts, 8MM lock washers and 5/16" flat washers. Do not tighten at this time. Once all the fasteners have been started and the plate is properly aligned tighten all fasteners securely.

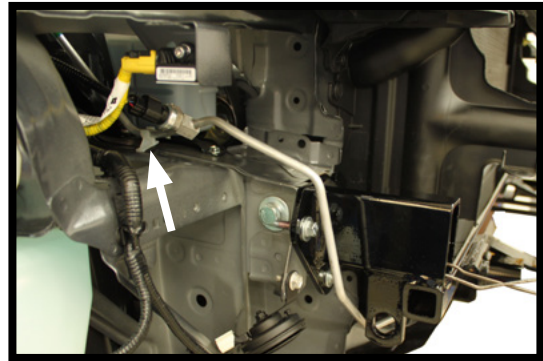
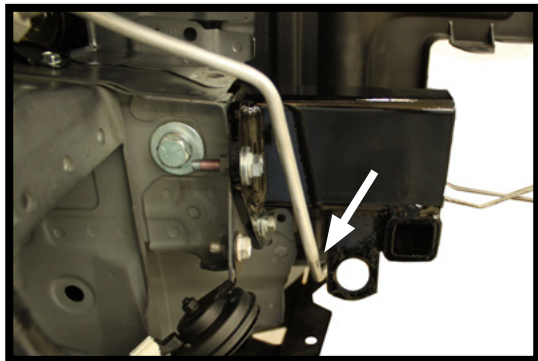


17. Insert a 1/2"-13 x 1-1/2" bolt, 1/2" lock washer and 1/2" flat washer into the side hole. Use a 1/2"-13 nut plate to fasten securely.

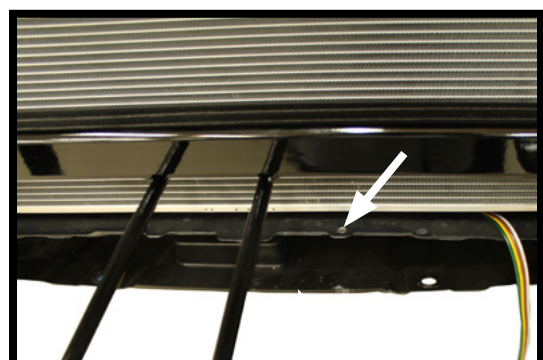
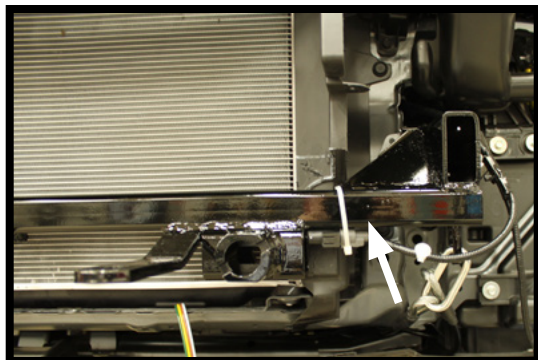
BX2258  
2012-13 Honda CR-V  
Installation Instructions



18. Insert a 1/2"-13 x 1-1/2" bolt, 1/2" lock washer and 1/2" flat washer into the bottom side hole. This hole may need to be reamed out slightly. Use a 1/2"-13 nut plate to fasten securely.

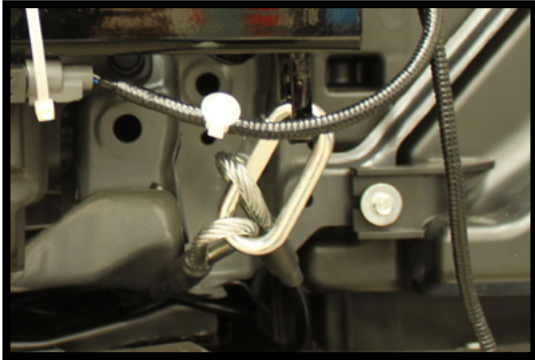


19. Make sure the coolant line does not interfere with the attachment tab. Snap coolant line back into bracket.



20. Using the cable tie that was provided, relocate the temperature sensor by attaching it to the baseplate.
21. To install a breakaway switch, drill a hole to the side of the electrical rods. Be sure to place a piece of metal on top of the frame rail to prevent accidentally drilling thru the radiator.

BX2258  
2012-13 Honda CR-V  
Installation Instructions



22. Attach the permanent baseplate safety cables to the provided convenience link on the baseplate. The photo shows the recommended installation of the cables to frame of vehicle. Additional options may interfere with suggested mounting; in this case, secure the cables to a solid piece of the frame as described in the instructions included with the permanent baseplate safety cables. Be sure the safety cables do not rub against any hoses or moving parts. Do this on **BOTH** sides of the vehicle.

23. Hold the fascia to the vehicle, mark and trim as needed to provide clearance for the baseplate. Reinstall the fascia making sure the baseplate convenience links and attachment tabs are situated thru the fascia before snapping the fascia back onto the vehicle.

## CUSTOMER SERVICE COMMITMENT

Blue Ox® is committed to providing you with exceptional customer care throughout your lifetime with our products. Our team is here to assist you with any questions you may have regarding the performance of your product. Simply call (402) 385-3051 and you can speak with our customer care team.

Additionally, please visit our website to see which rallies our Destination America team will be attending. For a nominal fee, our service technician will service your towing system to ensure it's in proper working condition. Also, as a commitment to our customers, should you visit our factory, you can stay at our full service Blue Ox® campground at no charge along with enjoying a factory tour.

Again, thank you for being our customer and for the confidence you have shown in the performance of our products. It is because of customers like you we enjoy the success we have today.

© 2012 Blue Ox  
One Mill Road, Industrial Park  
Pender, Nebraska 68047  
Phone: (402) 385-3051  
Fax: (402) 385-3360  
[www.blueox.com](http://www.blueox.com)