

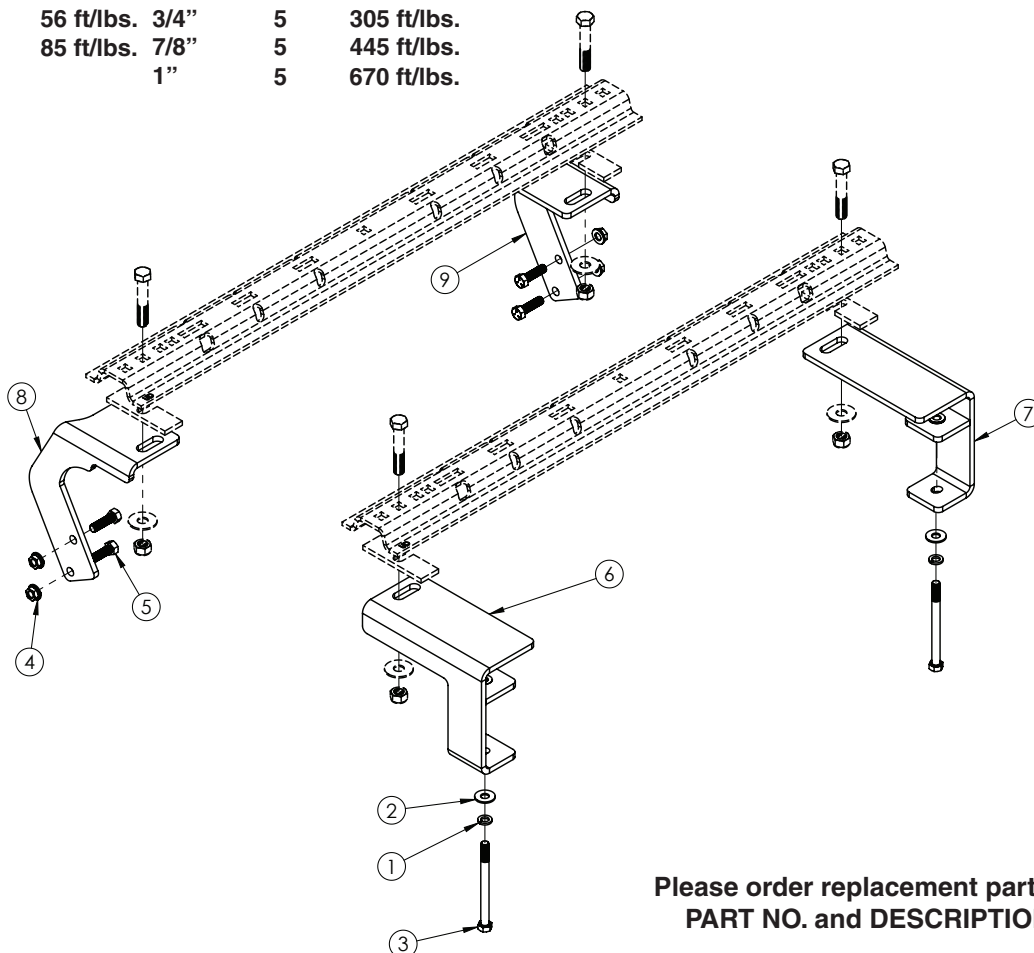


BOLT TORQUE SPECIFICATIONS

STANDARD BOLTS:

| Size | Grade | Torque | Size | Grade | Torque |
|-------|-------|------------|-------|-------|-------------|
| 5/16" | 5 | 20 ft/lbs. | 9/16" | 5 | 123 ft/lbs. |
| 3/8" | 5 | 35 ft/lbs. | 5/8" | 5 | 170 ft/lbs. |
| 7/16" | 5 | 56 ft/lbs. | 3/4" | 5 | 305 ft/lbs. |
| 1/2" | 5 | 85 ft/lbs. | 7/8" | 5 | 445 ft/lbs. |
| | | | 1" | 5 | 670 ft/lbs. |

FRAME BRACKET



Please order replacement parts by
PART NO. and DESCRIPTION.

8552022 PARTS LIST

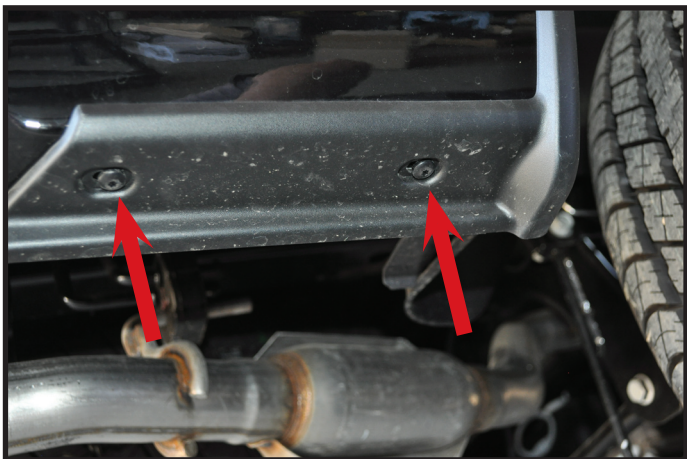
| REF. NO. | PART NO. | QTY. | DESCRIPTION |
|----------|----------|------|---|
| 1. | 00084 | 2 | 1/2" Lock Washer |
| 2. | 00085 | 2 | 1/2" Flat Washer |
| 3. | 00349 | 2 | 1/2" -NC x 6" Hex Bolt Gr.5 |
| 4. | 10379 | 4 | 1/2" -NC Serrated Flange Nut |
| 5. | 14266 | 4 | 1/2" -NC x 1 3/4" Hex Bolt knurled Gr.5 |
| 6. | 14509-76 | 1 | Rear Frame Bracket Driver Side |
| 7. | 14510-76 | 1 | Rear Frame Bracket Passenger Side |
| 8. | 14511-76 | 1 | Front Frame Bracket Driver Side |
| 9. | 14512-76 | 1 | Front Frame Bracket Passenger Side |
| 10. | 14238 | 1 | 1/2" Fish Wire (not shown) |

ASSEMBLY
OPERATION
REPLACEMENT PARTS

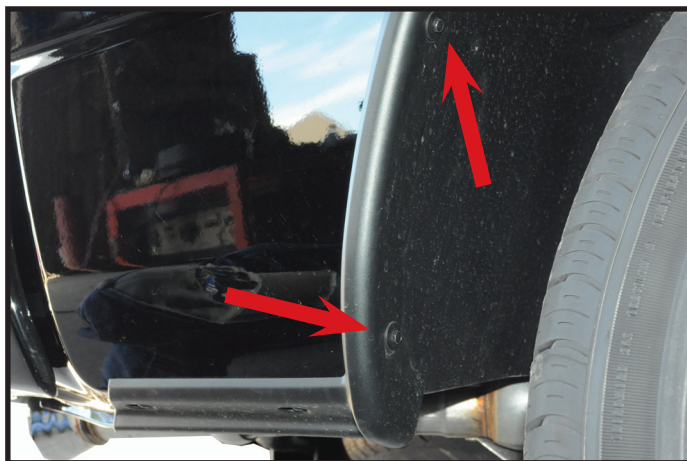
READ complete manual CAREFULLY
BEFORE attempting operation.

Doing Our Best to Provide You the Best

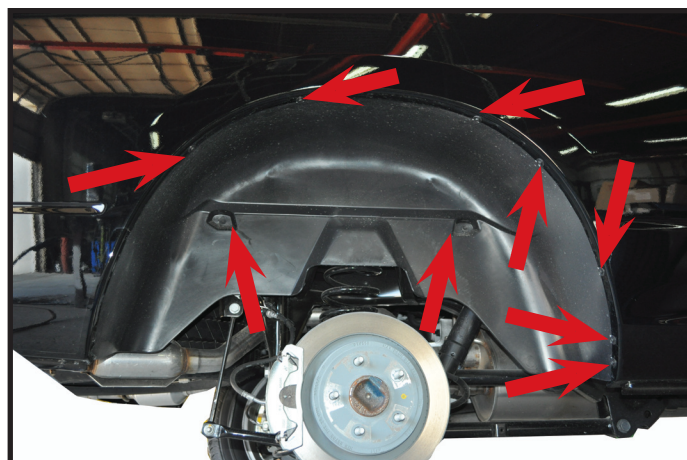
1. Jack rear of truck up and remove tires.



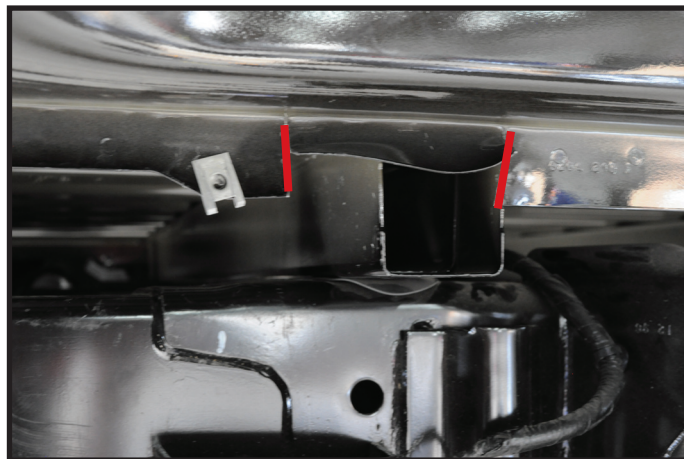
2. Remove two plastic push fasteners from bottom of box as shown in picture. Repeat on other side.



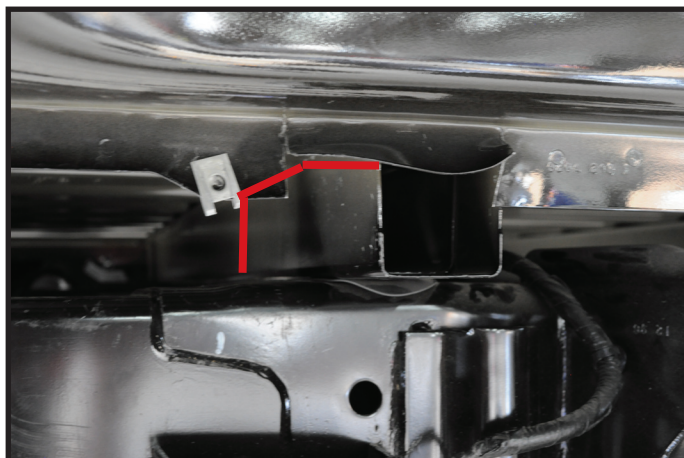
3. Remove two screws from plastic trim behind each wheel as shown.



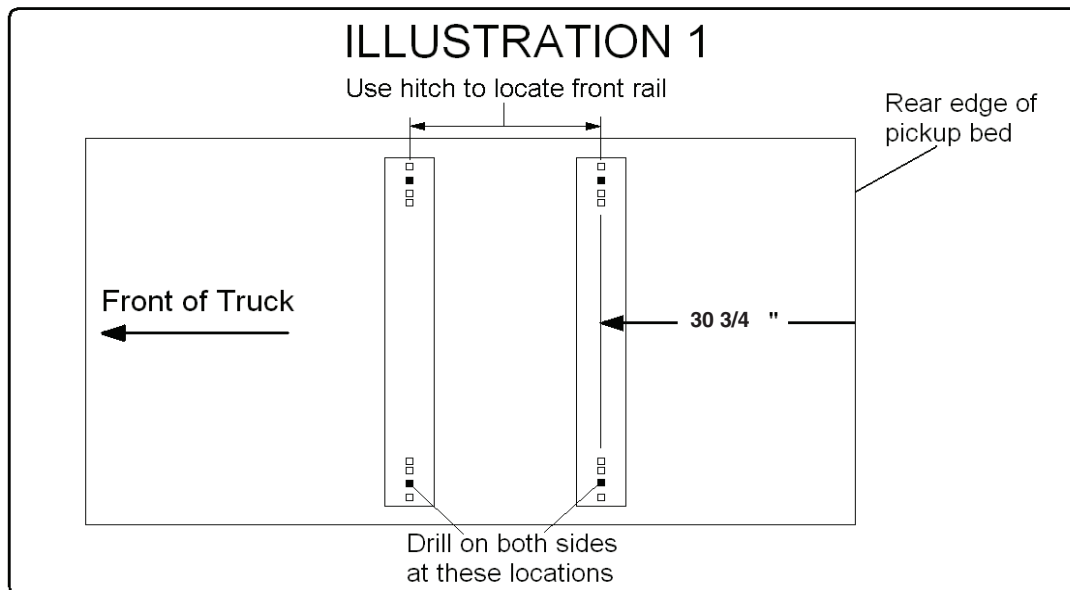
4. Remove remaining nine screws from each wheel well insert.



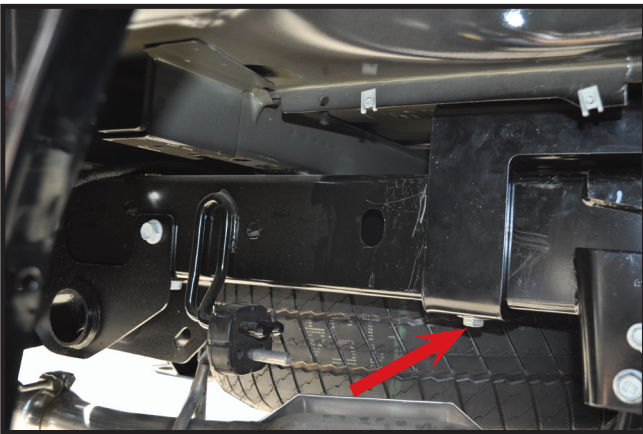
5. Cut flange as shown in each side in picture by box support behind coil spring. **NOTE: Be careful to not heat up the box paint may discolor in box.**



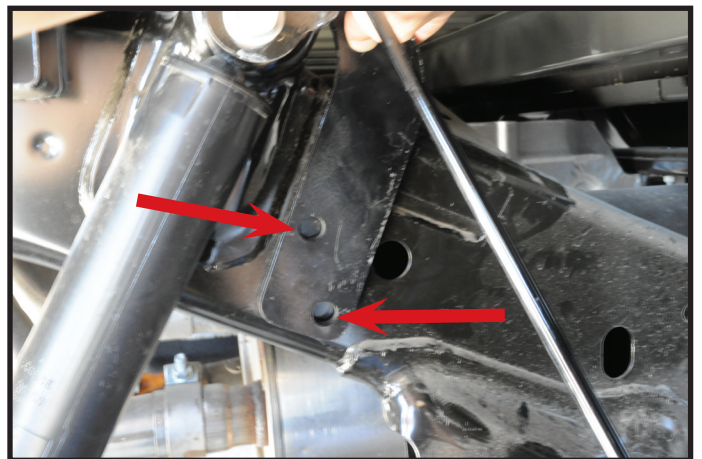
6. On the back side of box support cut along top and 7" in from end and then down. Fold back of support down and make bottom of box flush for clearance for frame bracket.



7. Fully assemble the 5th wheel hitch on a flat, level surface and pin into the base rails (assembly instructions come with hitch components). Place assembled hitch in truck bed between the wheel wells, center it side to side and measure 30 3/4" from back edge of truck box to the center of back bed rail.
8. First [check for obstructions under box](#), then drill 3/4" holes thru the second square hole from the end of rails.



9. Slide rear brackets in to place as shown and bolt using 1/2" x 6" bolt, flat washer, and lock washer. Leave bolts loose. Mount rear bed rail to bracket as shown in bed rail instructions.



11. Using the holes in the front frame bracket, drill 17/32" holes in the side of the frame. Each of the front frame brackets must be attached using two 1/2" x 1 1/2" hex knurl bolts and flange nuts that are fished through an access hole in the frame using fish wire provided in the kit. Tighten all bolts of front and rear frame bracket according to chart on front page.



10. Slide front frame brackets to outside of frame and mount front bed rail while keeping frame bracket tight to frame. Tighten all bed rail bolts according to chart on front page.



4010 320th St., P.O. BOX 189, BOYDEN, IA. 51234

PH: (712) 725-2311

FAX: (712) 725-2380 or 1-800-845-6420

TOLL FREE: 1-800-54DEMCO (1-800-543-3626)

www.demco-products.com