

# Slow-Roll RV Replacement Shower Door Installation Instructions

Part No. 015-3301 - 36" x 64" Shower Door

Part No. 015-3302 - 48" x 64" Shower Door

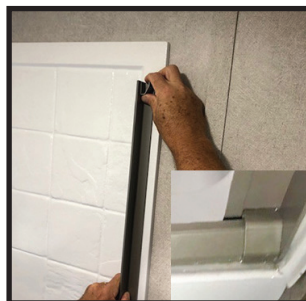
1. Peel/stick shower screen cartridge to shower wall jamb. Secure with **2 - #8 x 1-1/4"** screws through end cap screw slots.
2. Measure bottom of opening. Cut bottom track 2-1/2" shorter than opening measurement. Insert track into shower end cap.
3. Insert bottom track into slide rail end cap. Peel and stick side rail to wall jamb. (**NOTE:** swing peeled side rail onto wall jamb).
4. Slide round leadrail carrier into back side of top track. Insert top track into shower door upper end cap.
5. Press top track into side rail end cap. Secure top track and side rail with **1 - #6 x 1/2"** screw.
6. Silicone seal inside and outside of left and right side wall jamb and bottom threshold.



Step 1



Step 2



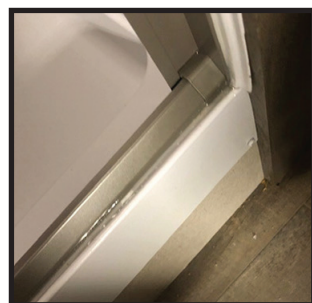
Step 3



Step 4



Step 5



Step 6



200 Jay Street, Coldwater, MI 49036  
517-278-8521 • 800-417-2477 • Fax: 517-278-2457  
[www.approducts.net](http://www.approducts.net)

