
Installation Instructions for Hitch Protector Skid Wheel
(PN #48-979020)

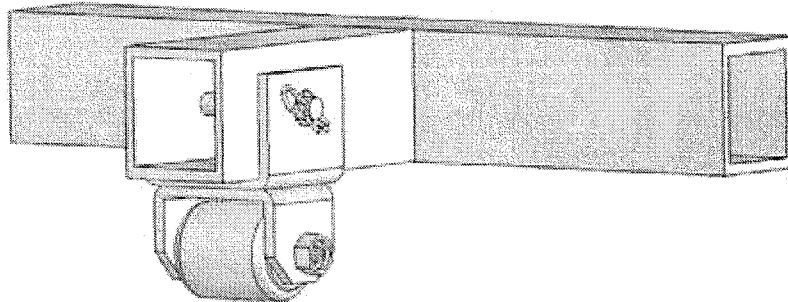


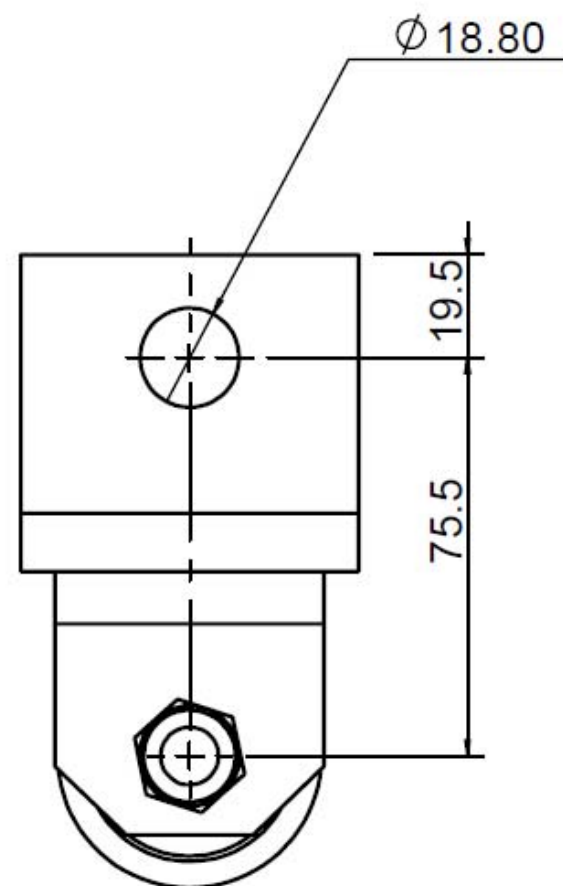
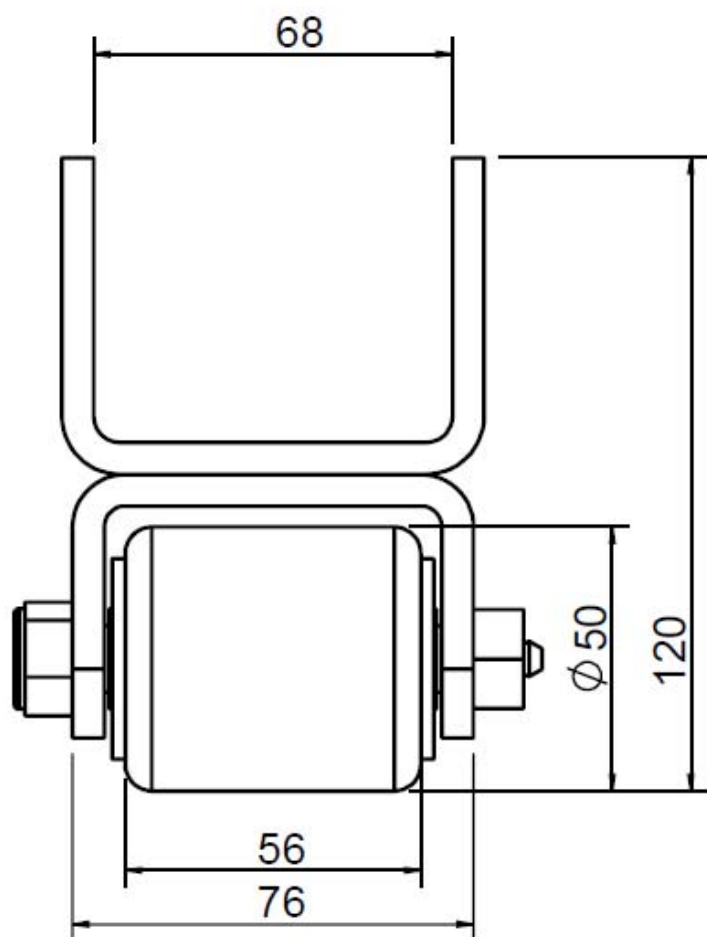
Illustration 1

1. Refer to **Illustration 1** above.
2. Place mounting bracket on outside of receiver hitch opening.
3. Insert the receiver hitch pin to hold roller assembly in place. (The hitch pin is not included and should be a part of the hitch.)
4. Grease skid roller bearings through the zerk fittings before use.

Note: The hitch protector can be used while towing trailer.

Parts List

| No. | Name | QTY |
|-----|----------------------------|-----|
| 1 | Hitch Protector Skid Wheel | 1 |



Shop for other trailer hitches & towing accessories on our website.