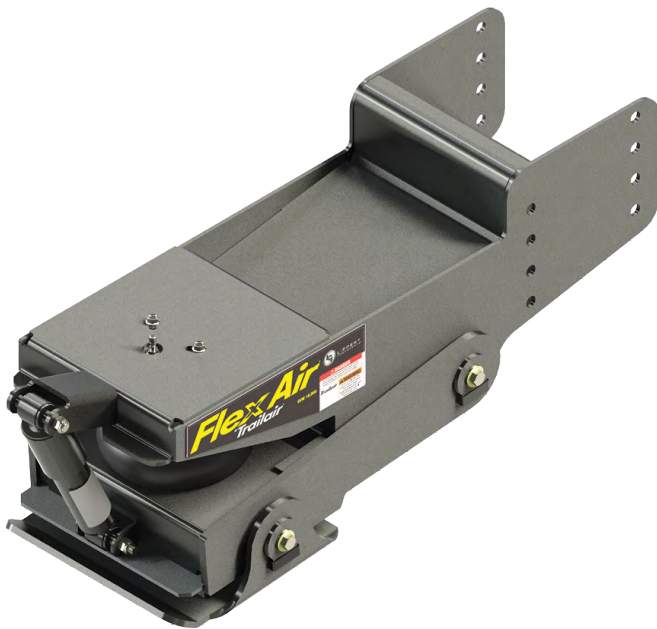




LIPPERT
COMPONENTS®

Flexair
BY Trailair®



Flex Air® Pin Box

Installation and Owner's Manual

(For Aftermarket Applications)

Table of Contents

Introduction	2
Tools Required	2
Parts List	2
Installation	3
Maintenance	4

Flex Air® Pin Box

Installation and Owner's Manual

(For Aftermarket Applications)

Introduction

Trailair® was first to the market with air ride for 5th wheels and still leads the way with innovative 5th wheel pin box technology. Our new Flex Air® Pin Box (**Fig.1**) combines our time tested Trailair air ride technology with our Rota-Flex® pivoting head to provide an unparalleled ride, eliminating chucking and the vertical tug-of-war between the 5th wheel and tow vehicle.

Tools Required

- 2-3 People
- Safety glasses
- Tape measure
- Air compressor
- Wrench and socket set
- Box end wrenches
- Level

Parts List

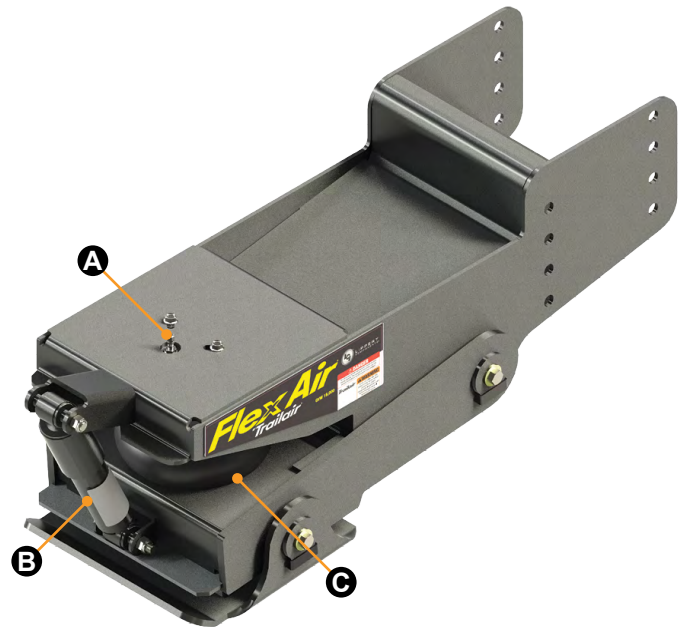


Fig.1

Letter	Part #	Description
A	156740	Tank Valve
B	177223	Oil Shock
C	156727	Air Spring



LIPPERT
COMPONENTS®

Flex Air® Pin Box

Installation and Owner's Manual

(For Aftermarket Applications)

Installation

⚠ CAUTION

MOVING PARTS CAN PINCH OR CRUSH.

NOTE: The 5th wheel should always be towed at a level condition. Adjustment of the pin box mounting height, the tow vehicle height, or suspension adjustments may be necessary to accomplish a level towing condition. Installation of the pin box should only be performed by a certified RV technician.

1. Level the trailer front to back.
2. Measure from the ground to the bottom of the kingpin plate on the current pin box. Record this dimension as A (Fig.2).

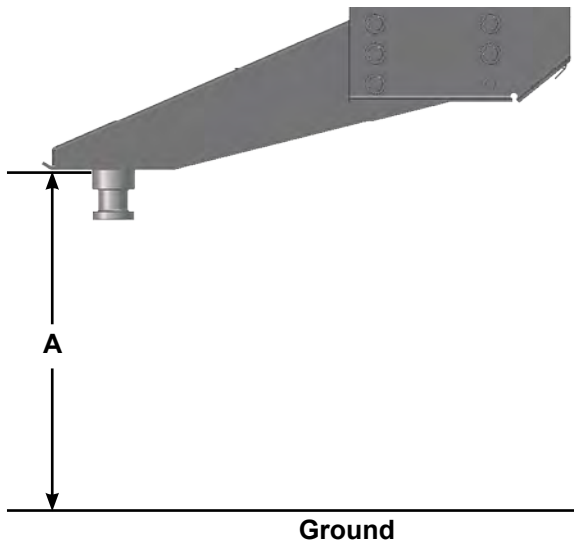


Fig.2

⚠ WARNING

PROPERLY SUPPORT PIN BOX BEFORE REMOVING BOLTS. FAILURE TO DO SO MAY RESULT IN SEVERE PRODUCT DAMAGE, DEATH OR SERIOUS INJURY.

3. Properly support the pin box assembly.

NOTE: As the pin box assembly weighs several hundred pounds, a minimum of two people are required to complete the removal and installation. A forklift may be used to lift the pin box into position.

4. Remove fasteners that hold the original pin box in place.
5. Hoist the new pin box into place.
6. Add 11 3/4" to dimension A. When installing the new pin box, measure from the ground up to the flat plate of the upper jaw of the pin box. Once the new pin box is aligned, that measurement should be equal to the measurement taken in step 2, plus 11 3/4" (Dimension B, Fig.3).

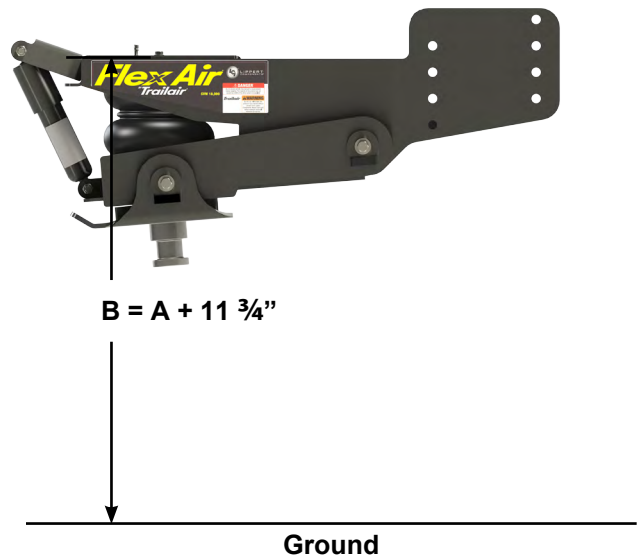


Fig.3

7. Re-install the bolts that held the pin box in place previously. LCI recommends using the nuts, bolts and washers that were removed previously, unless they are damaged or unusable.



LIPPERT
COMPONENTS®

Flex Air® Pin Box

Installation and Owner's Manual

(For Aftermarket Applications)

Maintenance

Periodically check the recess on the top of the pin box (**Fig.4A**) for standing water. Drain water and remove debris as needed. The area should be clean and clear of all contaminants.

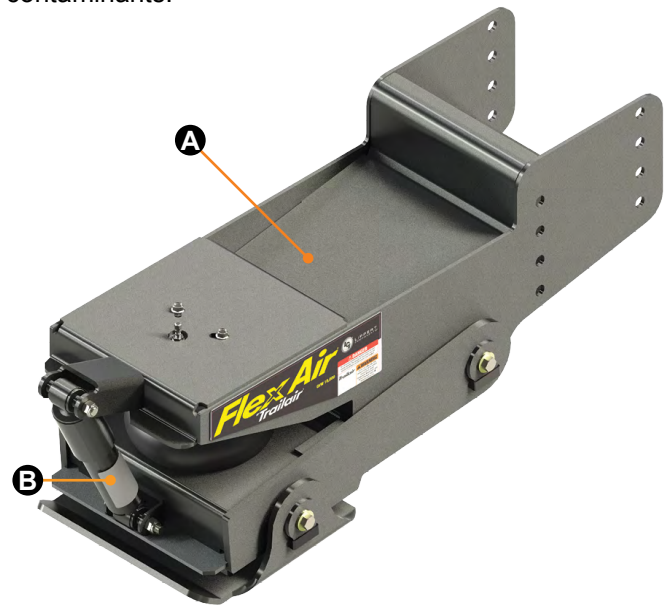


Fig.4



LIPPERT
COMPONENTS®

⚠ WARNING

DO NOT OVER INFLATE THE AIRBAG. IF THE AIRBAG IS OVER INFLATED, IT MAY BURST. THIS COULD CAUSE DEATH OR SERIOUS INJURY.

⚠ CAUTION

DO NOT INFLATE AIR SPRING UNLESS FULLY SECURED BY THE PIN BOX STRUCTURE, OTHERWISE BODILY INJURY COULD RESULT. FINISH BY INSTALLING THE SUPPLIED AIR CAP. LIKE A TIRE, THE AIR SPRING CAN LOSE AIR PRESSURE OVER TIME. BEFORE STARTING ON ANY TRIP YOU SHOULD CHECK THE RIDE HEIGHT MARK ON THE FRONT OF THE SHOCK ABSORBER WITH THE TRUCK AND TRAILER AT REST.

Manual information may be distributed as a complete document only, unless Lippert Components provides explicit consent to distribute individual parts.

All manual information is subject to change without notice. Revised editions will be available for free download at lci1.com. Manual information is considered factual until made obsolete by a revised version.

Please recycle all obsolete materials and contact Lippert Components with concerns or questions.