

DURA FAUCET LIMITED LIFETIME WARRANTY

Dura Faucet warrants its RV faucets to be leak and drip free during normal use for as long as the original consumer purchaser owns a Dura Faucet. If the faucet should leak or drip during normal use, Dura Faucet will, free of charge, mail to the purchaser the cartridge necessary to put the faucet in good working condition. This warranty applies only to Dura Faucets installed in the United States of America, Canada or Mexico (North America). | Dura Faucet also warrants all other aspects of the faucet or accessories to be free of defects in material and workmanship during normal usage in a recreational vehicle for as long as the original consumer purchaser owns his or her Dura Faucet. Plated metal and plated plastic finishes are warranted for (1) year. If a defect is found during normal use, Dura Faucet will, at its election, repair, provide a replacement part or product, or make appropriate adjustment. Damage to a product caused by accident, misuse, or abuse is not covered by this warranty. Improper care and cleaning will void the warranty. Proof of purchase (original sales receipt) must be provided to Dura Faucet with all warranty claims. Dura Faucet is not responsible for labor charges, installation, or other incidental or consequential costs. In no event shall the liability of Dura Faucet exceed the purchase price of the faucet. | If you believe that you have a warranty claim, contact Dura Faucet through our online contact form or send an email to customerservice@durafaucet.com Please be sure to provide all pertinent information regarding your claim, including a complete description of the problem, the product, model number, color, finish, the date the product was purchased and from whom the product was purchased. Also include your original invoice. If you don't have an original invoice, a photo of your faucet showing our brand markings is required. DURA FAUCET AND/OR SELLER DISCLAIM ANY LIABILITY FOR SPECIAL, INCIDENTAL OR CONSEQUENTIAL DAMAGES.

Some states/provinces do not allow limitations of how long an implied warranty lasts or the exclusion or limitation of such damages, so these limitations and exclusions may not apply to you. This warranty gives the consumer specific legal rights. You may also have other rights that vary from state/province to state/province.

*** Never use cleaners containing abrasive cleansers, ammonia, bleach, acids, waxes, alcohol, solvents or other products not recommended for plated metal or plastic finishes. This will void the warranty.**



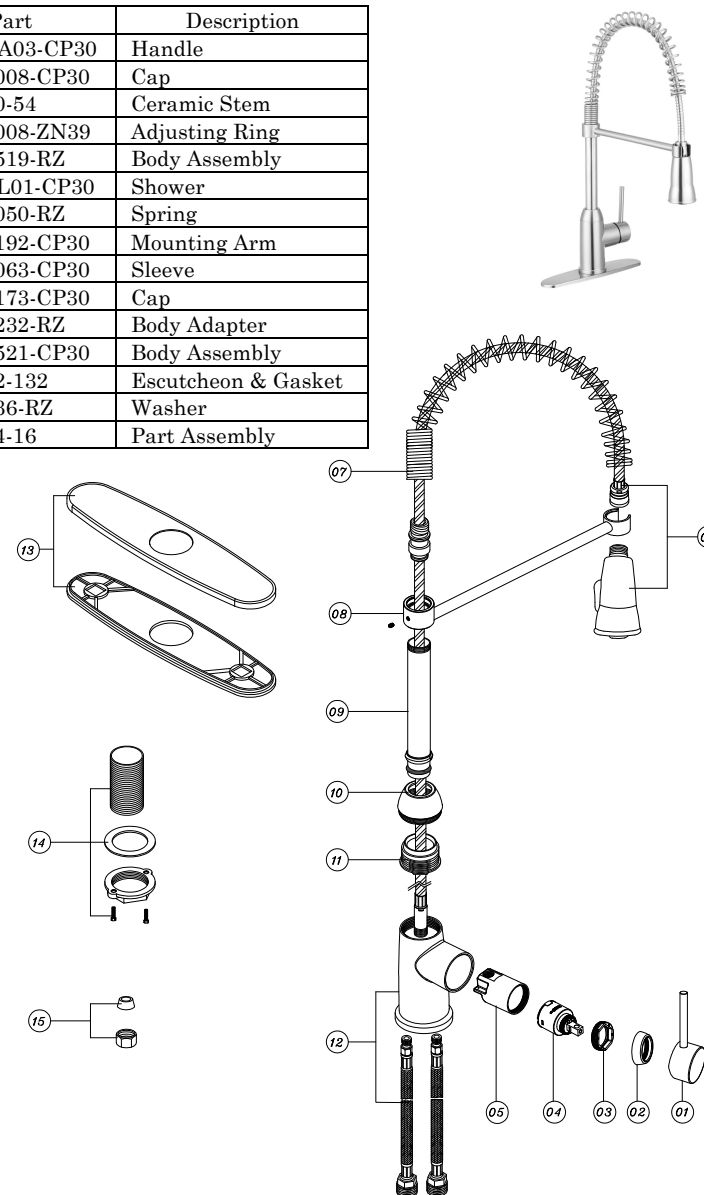
19215 SE 34th St. Ste 106-382
Camas, WA 98607
Tel/Fax: 888-242-5932
www.durafaucet.com



DURA Faucet
RV Faucet Specialists

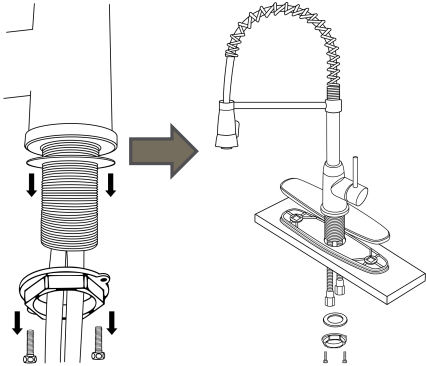
DF-NMK504 - SPRING COIL PULL-DOWN RV KITCHEN FAUCET

Item	Part	Description
01	C0430VA03-CP30	Handle
02	C07400008-CP30	Cap
03	E031020-54	Ceramic Stem
04	C10300008-ZN39	Adjusting Ring
05	C01159519-RZ	Body Assembly
06	E0810TL01-CP30	Shower
07	C10950050-RZ	Spring
08	E10100192-CP30	Mounting Arm
09	C10940063-CP30	Sleeve
10	C07300173-CP30	Cap
11	C10400232-RZ	Body Adapter
12	E01199521-CP30	Body Assembly
13	E021002-132	Escutcheon & Gasket
14	E2010036-RZ	Washer
15	E021004-16	Part Assembly



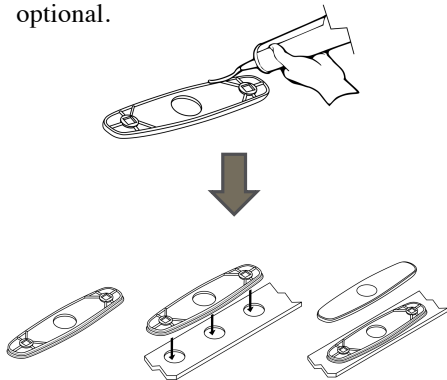
1 Secure Faucet (Optional)

Remove both the lock-nut and washer provided. Place faucet on sink by feeding hoses down through the center hole in sink. From below secure faucet by re-attaching lock-nut and washer and screwing down until tight. Make sure you tighten lock nut before screws.



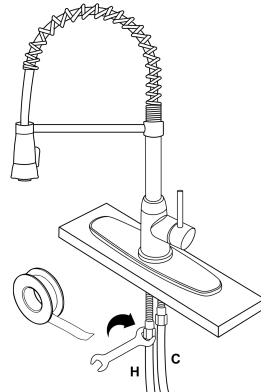
2 Fastening Deck-Plate

Apply plumbers putty or other suitable sealant to the bottom edges of the base-plate (optional). Once applied, align base-plate and press into place to firmly attach to sink. Remove excess plumber putty and place deck-plate onto base-plate. See images below. If installing on a one-hole sink installing the deck-plate is optional.



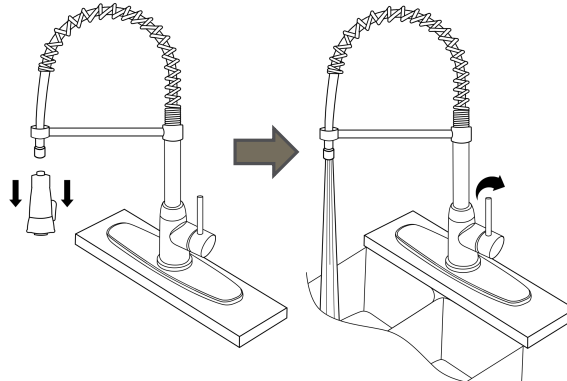
3 Connect Supplies

Securely attach marked supply lines with corresponding hot and cold tubes from faucet. Tighten all connections with wrench to ensure that no leaking occurs. With all pipe attachments plumbers tape can be utilized to help reduce the risk of leaking.



4 Flush Lines

Remove the aerator. Turn on the hot and cold water supply lines. Turn the faucet handle to the cold side and lift the handle to the "on" position. Run the water for one minute to remove any potential debris. Rotate handle to the warm side and run for a minute. During this process watch for any water leaks in the pipe. Reinstall the aerator.



MAINTENANCE AND CLEANING

Cleaning Tips: The finish on your faucet is designed to retain its beautiful sheen for years. To maintain the original look of the finish, a little care and caution should be used. We recommend the use of mild soap and water to clean the faucet. **THE USE OF ABRASIVE CLEANERS MAY SCRATCH THE FINISH OR CAUSE OTHER DAMAGE.**

RECOMMENDED TOOLS AND MATERIALS

- ◆ Plumbers Putty
- ◆ Adjustable Wrench
- ◆ Tape Measure
- ◆ Basin Wrench
- ◆ Phillips Screwdriver
- ◆ Pencil
- ◆ Masking Tape

BEFORE YOU BEGIN

There are a variety of things to do before installing any new plumbing system into your home or residence. Before you begin work make sure you:

- ◆ Shut off the main water supply
- ◆ Observed any local plumbing codes
- ◆ If possible, install the faucet before the sink
- ◆ Inspect tubing for damage - Replace as necessary

Dura Faucet reserves the right to make any revisions in the design of faucets without notice.