



1120 North Main Street • Elkhart, IN 46514

PHONE: 574•264•2131 FAX: 574•206•9713

INTERNET: <http://www.atwoodmobile.com>

LITERATURE NUMBER **MPD 53129**

BI-FOLD COVER

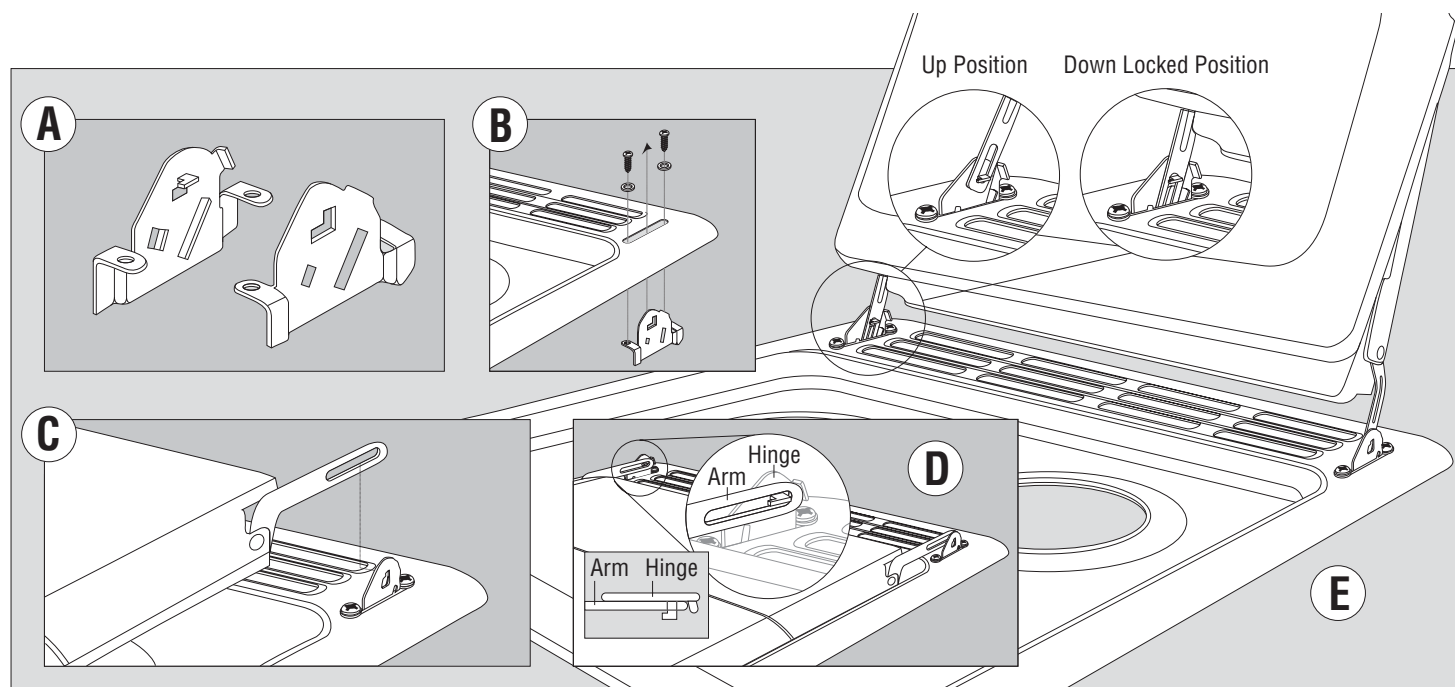
LP Gas Range & Slide-In Cooktops -
RV, CV, RA, CA (33 & 34) MODELS

ENGLISH, FRANÇAIS (et Canada)

•Installation •Operation

Effective 1/30/08

For complete LP gas range and slide-in cooktop instructions consult MPD 57279 (33) or MPD 51381 (34).



FOR YOUR SAFETY READ ALL INSTRUCTIONS BEFORE OPERATING

Installer: Provide these instructions to the consumer.

Consumer: Keep documents for future reference.

INSTALLATION

1. A Phillips head or #2 Square Recess head screwdriver is recommended for installation.
2. Remove the top and grate from the range.
3. Install left and right hinge brackets (FIG A) to top (FIG B) using mounting screws and stepped shoulder washers. The smaller diameter of the washer goes into and up against each end of the slot, the larger diameter step rides on top (and so is between the mounting screw and the range top). Apply no more than 40 in/lbs torque to the hinge mounting screws.
4. Replace the top and grate per manufacturing instructions for the range.
5. With the Bifold Cover in the down position, place the slot in the support arm over the protruding tab in the hinge brackets (FIG C & D). Support arms should be touching the inside surface of the hinge brackets (FIG D, insets).

OPERATION

WARNING **PERSONAL INJURY**

- When surface burners are in use, cover must be in the open, locked position.
- Never use cooking appliances while RV is in motion.

CAUTION **PRODUCT DAMAGE**

- Never close cover while the burners are in use.
- Never use the cover as a griddle.
- Never use cooking appliance while RV is moving.
- Cover must always be closed when the vehicle is in motion.
- This cover is designed for use only with Atwood/Wedgewood Vision brand RV range and slide-ins. Do not use with other brands.
- Failure to unlock the cover before closing may result in product damage.

Before cooking on range top, the cover must be open and locked in its full up and back position. This will prevent the cover from accidentally falling forward during cooking. The oven alone may be used with the cover in either the open or the closed position.

1. **TO OPEN** - Using two hands, one on each side of the front panel, lift and push the Bifold Cover up, fold (being careful not to pinch fingers) and rotate it away and toward the back of the range. The cover will slightly drop along the support arm slot and lock in place at the hinge (FIG E), resting on the protruding tab of the hinge bracket.
2. To determine if proper locking has been accomplished, gently pull the folded cover toward you. If it is locked, you will feel a positive stop.
3. After you determine that the cover is locked, make sure it is completely pivoted away from you and toward the back of the range.
4. **TO CLOSE** - Using two hands, one on each side of the front panel of the folded cover, lift upward until the bottom of the support arm slot touches the protruding tab of the hinge bracket, releasing it from the locked position. Then, rotate the cover forward and down.