

The nature of climate.™



Dometic Penguin II Low Profile Air Conditioner/Heat Pump

Continuous product improvement! That best describes what Dometic engineers have done with the Penguin II. RVers will appreciate new features and outstanding performance as only Dometic can deliver. The Penguin II creates the perfect comfort zone.



- Low profile, under 10-inches high – the lowest in the industry
- Sleek, contemporary shroud design reduces drag for improved mileage
- R410A refrigerant is eco-friendly and releases heat more efficiently
- Redesigned base pan with ribs is engineered for strength and durability
- Air conditioning or heat pump models available
- Perfect for ducted or non-ducted cooling systems
- Perfectly matched for Dometic's exclusive QuietZone system



 **Dometic**



The Penguin II has a sleek, futuristic look with incredible performance. Choose an air conditioner or heat pump for comfort and durability.

Full automation means freedom from worry.

The heat pump is thermostatically controlled (CCCII Thermostat) and automatically activates the LP gas furnace at 30 degrees for continuous relaxation.



Dometic Penguin II — Low Profile Air Conditioner

Dometic does cool with style. Our air conditioners are versatile performers with a low profile. Fully automated and worry free.

Air Distribution Box

- Five multi-directional air slots
- Ratcheting side vents
- Washable Hepa-style filters



Single Zone LCD Thermostat

- Simple, three-button operation
- Easy control for cool/furnace, heat pump or heat strips
- Low profile
- Manual or automatic control
- Large display screen



Comfort Control Center II

- Fully digital operation
- Large, low profile SMX bluelight display
- Industry first, real time-of-day, area independent programming
- Easily controls rooftop AC, heat pump, furnace, heat strip, Aquaheat floor system or Automatic Generator Start (AGS)



Return Air Grill

- Washable filter
- Quick cool air discharge
- Low profile



Copper tubing's lower heat factor provides superior heating and cooling.



Rubber damper reduces vibration and noise while adding support to copper tubing.



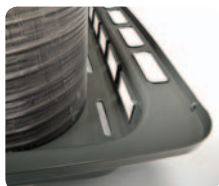
Ribbed fan housing adds strength for reduced vibration.



Dynamic shroud design reduces airflow resistance while providing maximum cooling.



Radius corners create strength, quiet and smooth air flow.

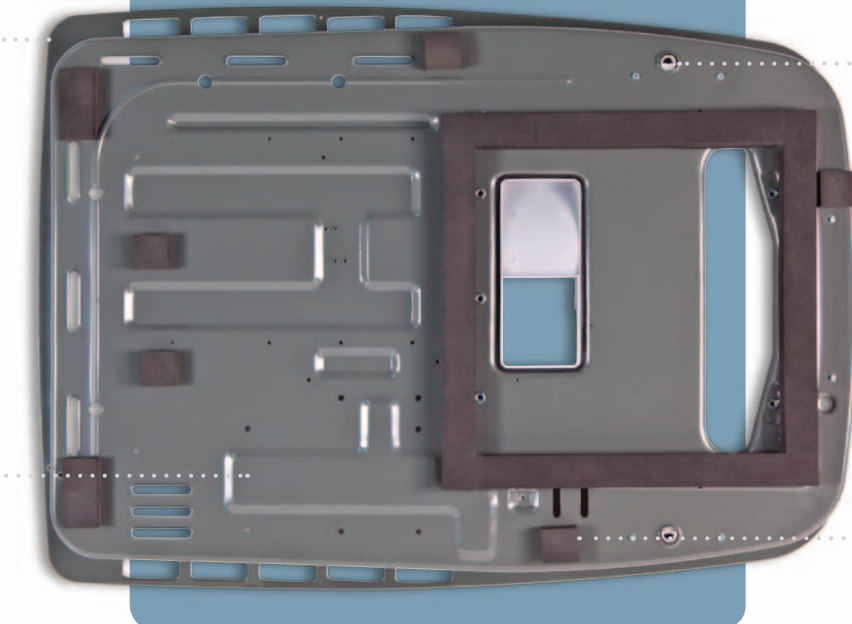
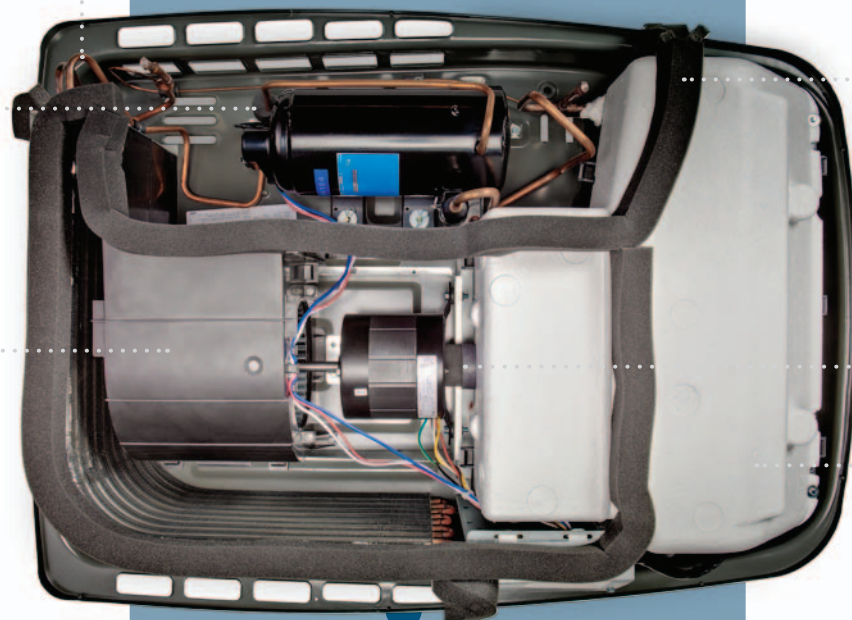


Convex basepan pattern distributes the weight of the AC unit for stability.



The Penguin Advantage

- Beautiful on the outside — genius on the inside.
- What you don't see makes the Penguin the industry leader in low profile RV air conditioners.



Foam Seals prevent unwanted heat transfer and loss of performance.



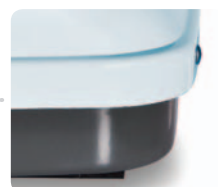
Unique foam collar around the motor shaft prevents noise transfer during operation.



Insulated evaporator housing prevents solar heat build-up.



Close tolerances between the base pan and shroud reduce vibration and noise.

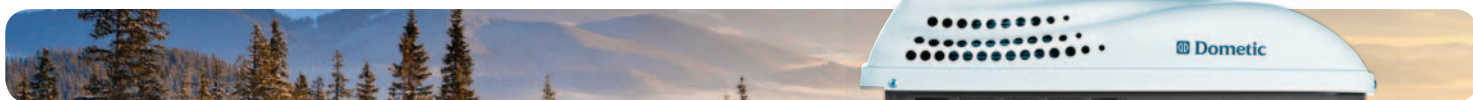


Raised ring around screw and drain holes prevent moisture from entering the RV interior.



High density foam blocks prevent vibration being felt inside the RV.





Dometic Penguin II — Low Profile Air Conditioner

Features	60312C	60315C	641935C 641915C	641815C	641835C	641816C	641916C
Nominal capacity, BTU/hr	11,000	13,500	13,500	13,500	13,500	High Capacity	High Capacity
Installation type	Non-ducted	Non-ducted	Non-ducted or Ducted	Non-ducted or Ducted	Non-ducted or Ducted	Non-ducted or Ducted	Non-ducted or Ducted
Electrical rating	120V AC, 60 Hz, 1Ph						
Compressor-rated load amps	10.5	12.7	12.7	12.7	12.7	13.4	13.4
Fan motor-rated load amps	2.6	2.6	2.6	2.6	2.6	2.6	2.6
Compressor-locked rotor amps	53	63	63	63	63	63	63
Fan motor-locked rotor amps	8.5	8.5	8.5	8.5	8.5	8.5	8.5
SCFM, high-speed max./min.	320/250	320/250	320/250	320/250	320/250	310/230	310/230
Heater amps/watts @ 120V AC			13.7/1,530		13.7/1,530		
Refrigerant 410A (oz.)	19.0	18.0	18.0	18.0	18.0	25.0	25.0
Minimum wire size	12 AWG copper up to 24 feet. For distances over 24 feet consult the National Electrical Code.						
AC circuit protection	(User Supplied) 20 amp time delay fuse or 20 HCAR circuit breaker						
DC circuit protection	(User Supplied) Installation must comply with national, state, provincial and/or local electrical codes						
Installed weight, lbs.	99	99	99	99	99	110	110
Minimum generator size - 1 unit	2.5 KW	3.5 KW	3.5 KW	3.5 KW	3.5 KW	3.5 KW	3.5 KW
Minimum generator size - 2 units	4.0 KW	5.0 KW	5.0 KW	5.0 KW	5.0 KW	5.0 KW	5.0 KW
Thermostat/Control options	ADB or Control Kit	ADB or Control Kit	Single zone LCD	Multi zone CCC 2	Multi zone CCC 2	Multi zone CCC 2	Single zone LCD

Dometic Penguin II — Low Profile Heat Pump

Features	650015C	651815C	651816C	651916
Nominal capacity, BTU/hr.	13,500	13,500	High Capacity	High Capacity
Installation type	Non-ducted	Non-ducted or Ducted	Non-ducted or Ducted	Non-ducted or Ducted
Electrical rating	120V AC, 60 Hz, 1Ph			
Compressor-rated load amps	13.1	13.1	13.4	13.4
Fan motor-rated load amps	2.6	2.6	2.6	2.6
Compressor-locked rotor amps	63	63	63	63
Fan motor-locked rotor amps	8.5	8.5	8.5	8.5
SCFM, high-speed max./min.	320/250	320/250	310/230	310/230
Refrigerant 410A (oz.)	24	24	27	27
Minimum wire size	2 AWG copper up to 24 feet. For distances over 24 feet consult the National Electrical Code.			
AC circuit protection	(User Supplied) 20 amp time delay fuse or 20 HCAR circuit breaker			
DC circuit protection	(User Supplied) Installation must comply with national, state, provincial and/or local electrical codes			
Installed weight, lbs.	99	99	99	99
Minimum generator size - 1 unit	3.5 KW	3.5 KW	3.5 KW	3.5 KW
Minimum generator size - 2 units	5.0 KW	5.0 KW	5.0 KW	5.0 KW
Thermostat/Control options	ADB	Multi zone CCCII	Multi zone	Single Zone LCD

Outstanding Warranty

Dometic's 2-Year Protection Plus warranty.

For more information visit www.Dometic.com/USA

Dometic reserves the right to make improvements or modifications without notice.



Printed on recycled paper with 25% post consumer content with environmentally safe ink.

Printed in U.S.A. ©2011 Dometic Corporation OS2136 DRV-729/TM/11-11/1.5M

 **Dometic**