

RV PRODUCT DATA SHEET

OEM: 4048-153-A75

AFTERMARKET: 4048-153-E75

APPLICATION

Multi-fixture RV adjustable by-pass fresh water pump installation.
Other uses may include 12V DC pressurized water systems in cabins.
This pump may be used for general fresh water transfer.

PUMP:

Type: 4 Chamber Diaphragm pump
Ports: 1/2"-14 NPSM-Male
Liquid: 130 °F [54 °C] Max
Dry-Prime: 6 feet [1.82 M]
Inlet PSI: 30 PSI [2.1 Bar] Max
Run Dry: Yes

ELECTRICAL:

Motor: 12VDC Permanent Magnet, Intermittent Duty
Protection: Thermal Overload, Automatic Restart
Leads: 14 AWG, 10" [25 cm] Red +, 13" [33 cm] Black -
Fuse: 15 Amp Recommended
Control: Shut-Off 55 PSI [3.8 Bar]
Restart 40 PSI [2.8 Bar]
Max By-Pass 65 PSI [4.5 Bar]

MATERIALS:

Housing: Polypro
Valves: EPDM
Diaphragm: Santoprene
Hardware: Stainless and Zinc Plated Steel

APPROVALS:

CSA, CE, e-Mark

SHIPPING:

Net Weight: 7.9 Lb [3.5 Kg] each
Carton Quantity: 6
Carton Weight: 50 lbs [22.6 Kg]
Carton Size: 24"L x 18"W x 6"H
[61cm x 46cm x 15cm]

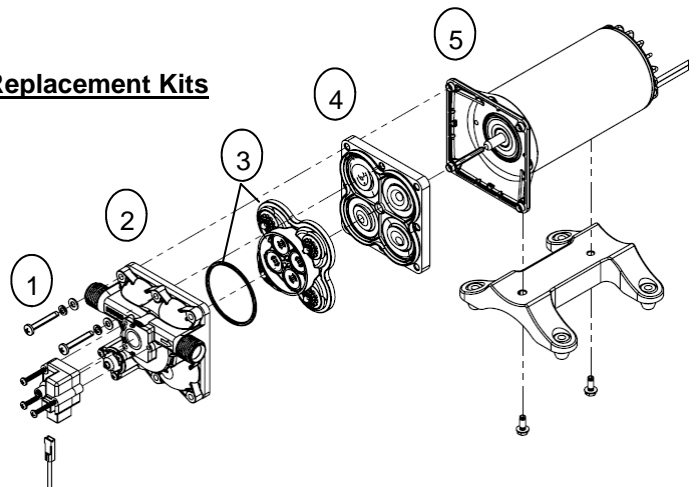
RELATED DOCUMENTS:

Catalog: MS-030-138
Installation Manual: 911-1024
Applications Spec Guide: MS-020-005



SHURflo's New 4048 series fresh water pump design was created with unique over-molded single-piece diaphragm and internal by-pass, assuring long life and top performance in all plumbing systems. Designed as the next legendary pump to exceed the expectations of our customers, the 4048 series pump is constructed for high flow demand, sooth flow and no rapid cycling. SHURflo's quality reputation has been built on the reliability and dependability of every pump we build. The 4048 series fresh water automatic demand pump is quiet, thermally protected and can run dry without damage.

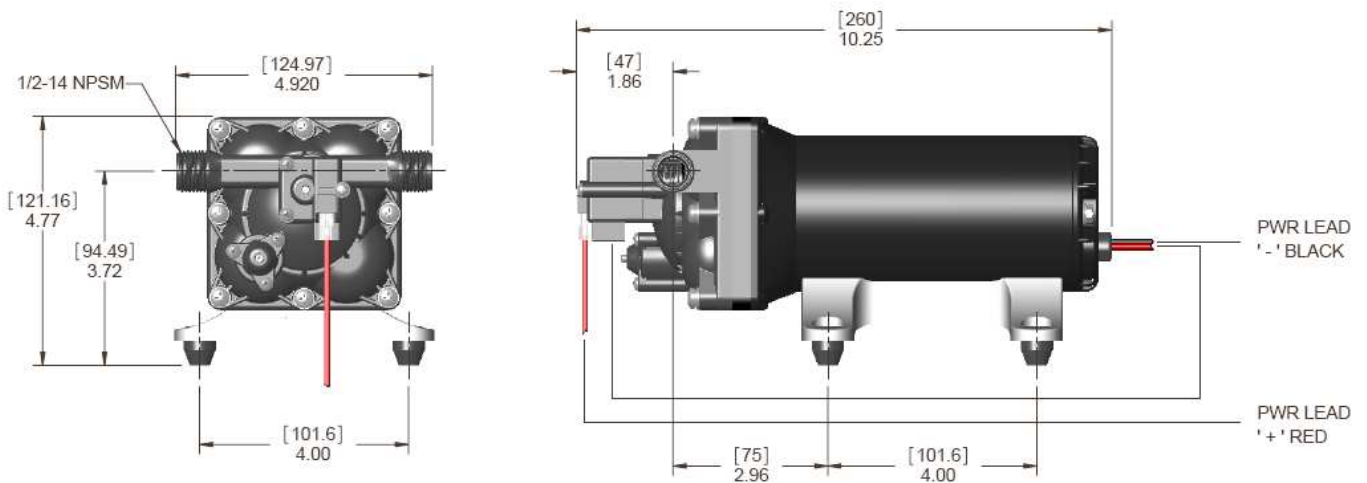
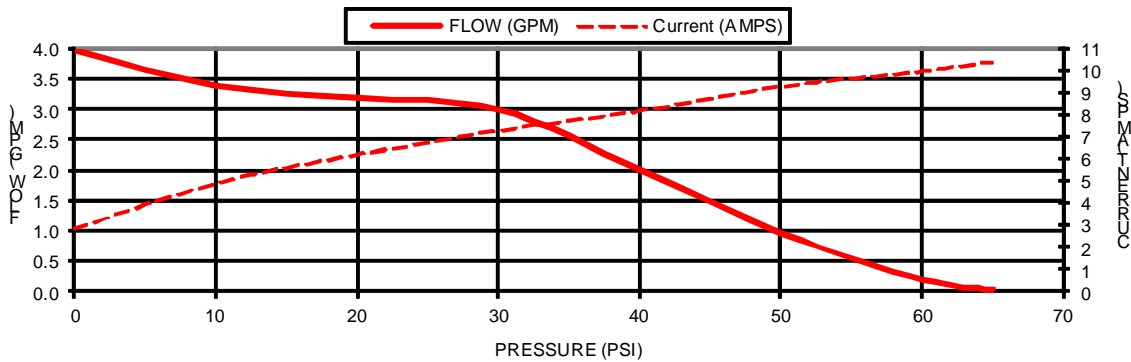
Replacement Kits



Number	Description	Part Number
1	Pressure Switch	94-801-05
1,2	Upper Assembly	94-801-01
3	Valve Assembly	94-800-01
4	Drive Assembly	94-801-02
5	Motor	94-71-001-07
1,2,3,4	Pump Head	94-801-04
Not Shown	Check Valve	94-800-03

TYPICAL PERFORMANCE

PRESSURE		FLOW		CURRENT
BAR	PSI	GPM	LPM	AMPS
0.0	0	4.0	15.1	2.8
0.7	10	3.4	12.8	4.9
1.4	20	3.2	12.1	6.2
2.1	30	3.0	11.3	7.3
2.8	40	2.0	5.79	8.2
3.4	50	0.95	7.57	9.3
4.1	60	0.18	0.68	10.0
4.5	65	0	0	10.4



SHURFLO

3545 Harbor Gateway South, Ste. 103, Costa Mesa, CA 92626, (800) 854-3218 www.SHURFLO.com

SHURFLO Europe, Middle East, Africa

Pentair Water Belgium bvba, Industriepark Wolfstee, Toekomstlaan 30, B-2200 Herentals, Belgium, +32-14-283500

All Pentair trademarks and logos are owned by Pentair, Inc. All other brand or product names are trademarks or registered marks of their respective owners. Because we are continuously improving our products and services, Pentair reserves the right to change specifications without prior notice. Pentair is an equal opportunity employer.

4048-153-A75 (E75) Rev. 07/12 ©2012 Pentair, Inc. All rights Reserved.