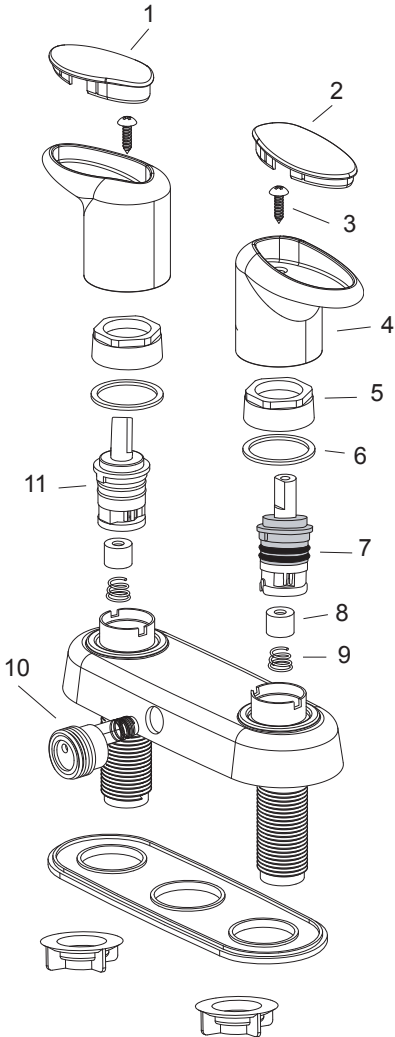


### Limited Lifetime Warranty

Phoenix Products, Inc. warrants its faucets against defects in material or workmanship, ordinary wear and tear excluded. Special finishes other than chrome are warranted to for (1) year. Should any faucet, part or parts thereof prove defective, contact us for assistance. Repair or replacement will be made without charge upon return of the defective material. **Liability for consequential damages under any and all warranties are excluded to the extent such exclusion is permitted by law.** Some states do not allow exclusion or limitation and exclusion may not apply to you. This warranty gives you specific legal rights, and you may also have other rights which vary from state to state.



No.	NAME
1	HOT BUTTON (CLEAR)
	HOT BUTTON (WHITE)
2	COLD BUTTON (CLEAR)
	COLD BUTTON (WHITE)
3	SCREW
4	HANDLE (CLEAR)
	HANDLE (WHITE)
5	CARTRIDGE NUT
6	CARTRIDGE NUT WASHER
7	COLD SIDE CARTRIDGE
8	SEAT WASHER
9	SEAT SPRING
10	VACUUM BREAKER
11	HOT SIDE CARTRIDGE

**NOTE:** Actual parts for your faucet may not look like those shown here. This illustration is for the purpose of identifying the name and placement of parts.

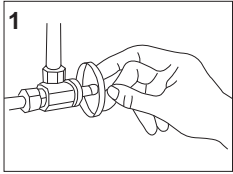
\*Asterisked parts are not standard on all models.

For additional information call us at 1.800.222.6041  
Toll free  
or visit us online at phoenixfaucets.com



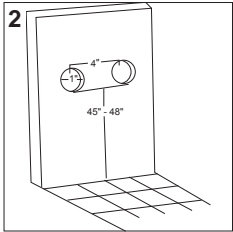
**Two Handle Shower**

Catalina RV Faucets and Parts  
a division of Phoenix Products, Inc.  
583 Miller Rd.  
Avon Lake, OH 44012  
1.440.933.8100 Phone  
1.800.222.6041 Toll free  
1.440.933.6252 Fax  
www.phoenixfaucets.com



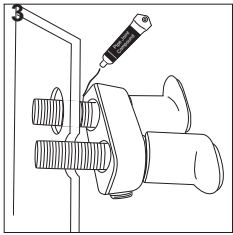
### 1. SHUT OFF SUPPLY

Shut off hot and cold water supply lines. Clear area of all debris.



### 2. DRILL HOLES

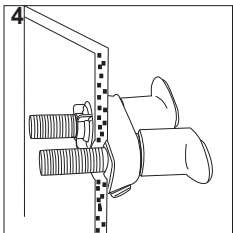
Drill (2) 1" diameter holes spaced at 4" centers, in the shower wall surround 45" to 48" above the floor line.



### 3. POSITION UNIT

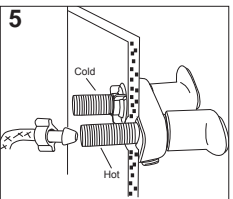
Spread a small amount of tub and tile caulk on the surface of the bottom plate facing the wall. Position faucet through holes of wall.

NOTE: The vacuum breaker outlet points downward.



### 4. TIGHTEN LOCKNUTS

Align faucet from back side of mounting surface and secure by hand tightening locknuts. THE BOTTOM PLATE MUST BE USED.

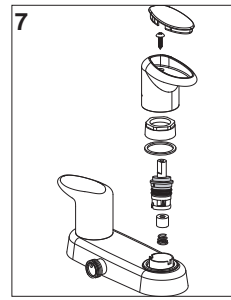


### 5. CONNECT WATER SUPPLY

Connect water supply: Hot water to the left and cold water to the right. Make sure that the end of your existing supply line is straight and will touch the chamfer on the inside of the threaded shank. Screw the tailpiece nut onto the faucet shank. Hand tighten.

### 6. FLUSH LINES

Turn on water supply to faucet. Flush lines by running both cold and hot water through faucet in full open position for 15-20 seconds. Check supply lines for leaks.



### 7. WASHERLESS CARTRIDGE

If the faucet develops a leak, it may be the result of debris in the water line which is preventing a good seal. Turn the faucet full on and off several times to flush out any material that may be lodged in the faucet. If the problem persists, follow these steps: Turn off the water supply. Open the faucet to relieve any line pressure. Unsnap the Hot or Cold index button on the handle. Remove the handle screw using a phillips screwdriver. Lift the handle off. Remove the cartridge nut counterclockwise with an 8" crescent wrench. Remove the cartridge by gently prying the cartridge flange up with a small blade screwdriver. Remove rubber seat washer if necessary to remove debris. Replace all components in reverse order. Make sure triangle arrow on bonnet face points outboard and keys are in keyway. Turn water on and check for leaks. Replace handle, screw and button.

### OPERATING INSTRUCTIONS

Rotating the hot side lever handle counter clockwise, and likewise rotating the cold side lever handle clockwise, opens the cartridge and causes water to flow out the vacuum breaker. The degree of handle opening determines the volume of water flow.

Returning the lever handles to their original position stops the water flow.

### CLEANING TIPS

The finish on your Phoenix faucet is designed to retain its beautiful sheen for years. To maintain the original look of the finish, a little care and caution should be used. We recommend the use of mild soap and water to clean the faucet. **THE USE OF ABRASIVE CLEANERS MAY SCRATCH THE FINISH.**

### HELPFUL HINTS

Be especially careful when screwing threaded connections together. Do not tighten any connection if the parts are not threading evenly. Unscrew the parts and start over. Unscrew the nut until a click is heard. Then screw the nut on clockwise.

### CAUTIONS:

- All plastic connections should be hand tightened. DO NOT USE TOOLS.
- No sealant of any kind should be used between the tailpiece nut and the faucet shank.
- Must be installed with a cUPC® listed vacuum breaker.
- Back flow prevention is obtained by a check valve in the vacuum breaker to stop back siphonage under negative water supply pressures. If the check valve seat were to become clogged due to line trash, air enters the atmospheric port to break the back siphonage. The atmospheric port must be kept free of blockage.

The water in the hand held shower hose will drain through the vacuum breaker when the faucet is turned off. This is not a leak. This drainage is inherent in the design of the vacuum breaker, and is evidence that it is functioning properly.