

Limited Lifetime Warranty

Phoenix Products, Inc. warrants its faucets against defects in material or workmanship, ordinary wear and tear excluded. Special finishes other than chrome are warranted to for (1) year. Should any faucet, part or parts thereof prove defective, contact us for assistance. Repair or replacement will be made without charge upon return of the defective material.

Liability for consequential damages under any and all warranties are excluded to the extent such exclusion is permitted by law. Some states do not allow exclusion or limitation and exclusion may not apply to you. This warranty gives you specific legal rights, and you may also have other rights which vary from state to state.



Making Water Work Beautifully

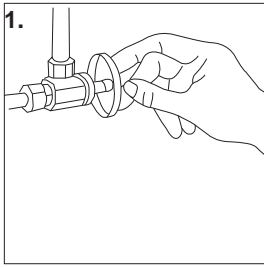


2 Handle Kitchen Faucets

Phoenix Products, Inc.
583 Miller Rd.
Avon Lake, OH 44012
1.440.933.8100 Phone
1.800.222.6041 Toll free
1.440.933.6252 Fax
www.phoenixfaucets.com

©Phoenix Products, Inc. All rights reserved

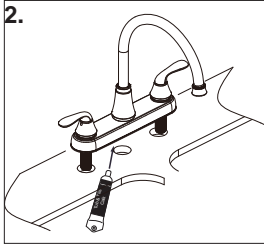
I-HBKIT2 r5-12



INSTALLATION:

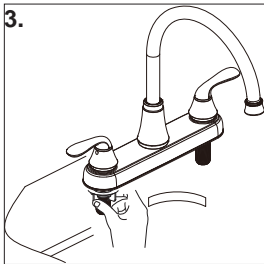
1. SHUT OFF SUPPLY

Shut off hot and cold water supply lines. Clear Sink ledge of all debris.



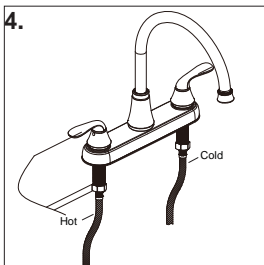
2. POSITION FAUCET

Spread a small amount of tub and tile caulk on the surface of the bottom plate facing the counter or sink. Position faucet through bottom plate, down through holes of counter top or sink.



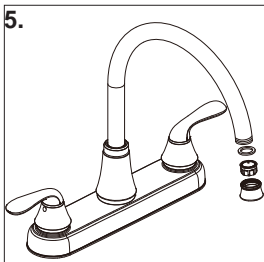
3. TIGHTEN LOCKNUTS

Align faucet on sink. From underside of mounting surface slip rubber washers onto shanks and thread locknuts and hand tighten to secure. **THE BOTTOM PLATE MUST BE USED.**



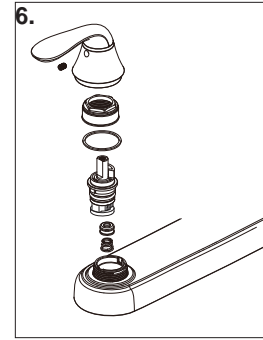
4. CONNECT WATER SUPPLY

Connect water supply: Hot water to the left and cold water to the right. Make sure that the end of your existing supply line is straight and will touch the chamfer on the inside of the threaded shank. Screw the tailpiece nut onto the faucet shank. Hand tighten.



5. FLUSH LINES (IF NECESSARY IN NEW CONSTRUCTION)

Remove aerator. Turn on water supply to faucet. Flush lines by running both cold and hot water through faucet in full open position for 15-20 seconds. Replace aerator (do not cross thread). Check supply lines for leaks. If aerator ever becomes clogged, repeat flushing.



6. CARTRIDGE

If the faucet develops a leak, it may be the result of debris in the water line which is preventing a good seal. Turn the faucet full on and off several times to flush out any material that may be lodged in the faucet. If the problem persists, follow these steps:

Turn off the water supply. Open the faucet to relieve any line pressure. Remove the handle by loosening the set screw. Remove the cartridge nut counterclockwise with an 8" crescent wrench. Remove the cartridge by gently prying the cartridge flange up with a small blade screwdriver. Remove rubber seat washer inside faucet shank if necessary to remove debris. Replace all components in reverse order. Turn water on and check for leaks. Replace handle.

OPERATING INSTRUCTIONS

Rotating the hot side lever handle counter clockwise, and likewise rotating the cold side lever handle clockwise, opens the cartridge and causes water to flow out the aerator. The degree of handle opening determines the volume of water flow. Returning the lever handles to their original position stops the water flow.

CLEANING TIPS

The finish on your Phoenix faucet is designed to retain its beautiful sheen for years. To maintain the original look of the finish, a little care and caution should be used. We recommend the use of mild soap and water to clean the faucet. **THE USE OF ABRASIVE CLEANERS MAY SCRATCH THE FINISH.**

HELPFUL HINTS

Be especially careful when screwing threaded connections together. Do not tighten any connection if the parts are not threading evenly. Unscrew the parts and start over. Unscrew the nut until a click is heard. Then screw the nut on clockwise.

CAUTIONS:

All plastic connections should be hand tightened. **DO NOT USE TOOLS.** No sealant of any kind should be used between the tailpiece nut and the faucet shank.