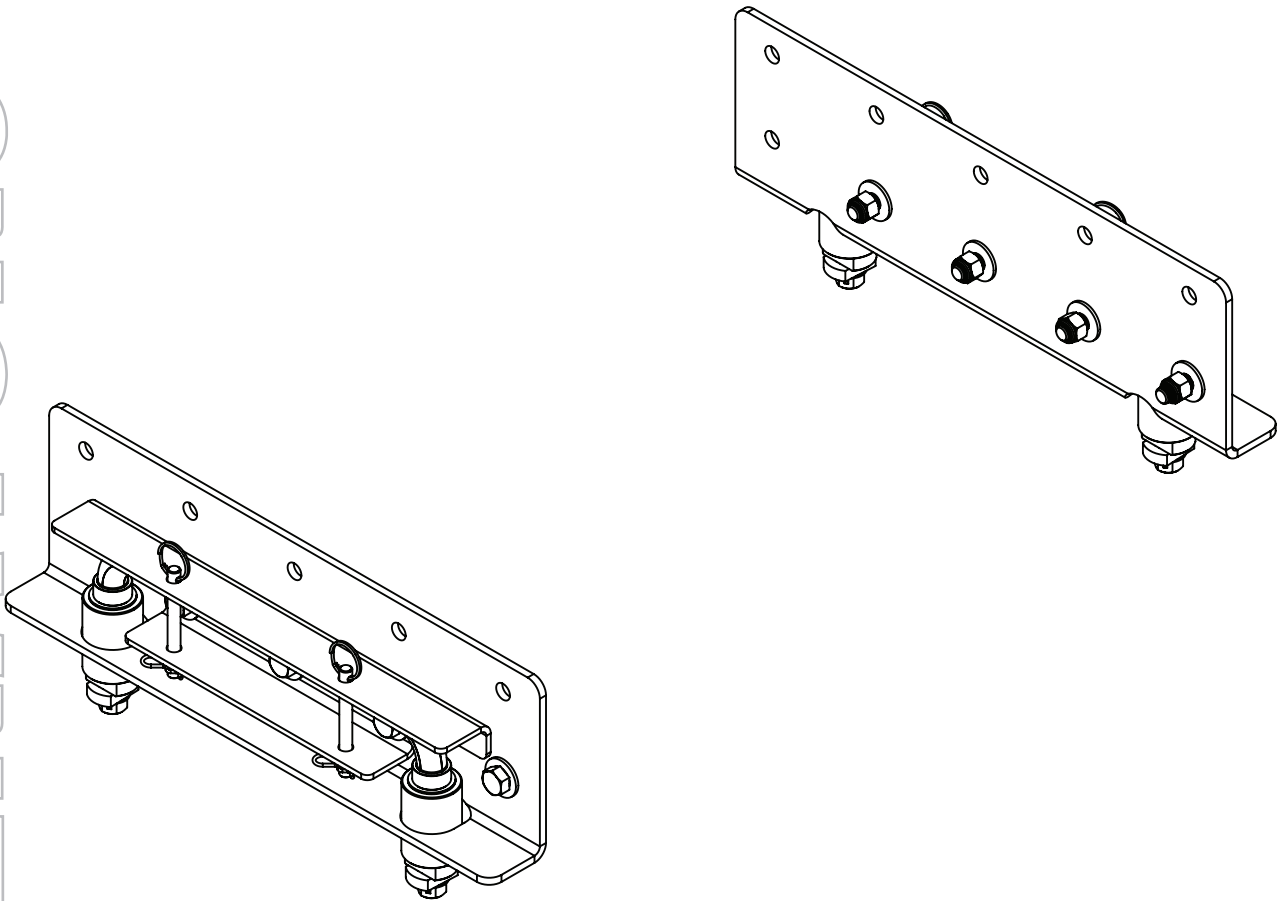




5th Wheel Side Rail Assemblies

6033 AS REESE Style UMS



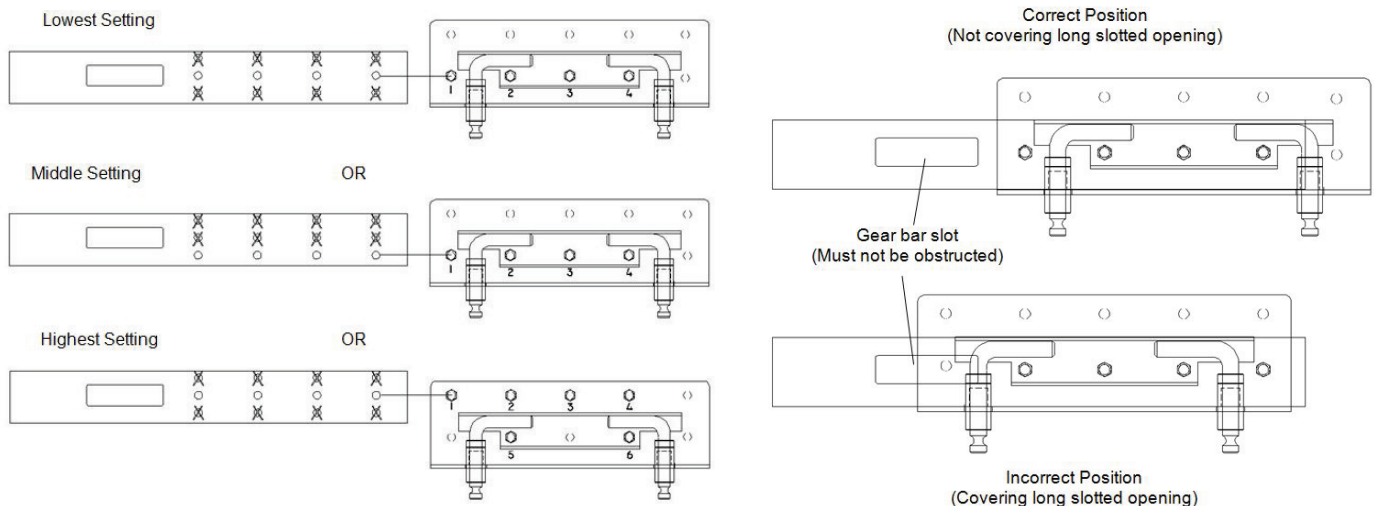
READ *complete manual CAREFULLY
BEFORE attempting operation.*

Doing Our Best to Provide You the Best

6033 Reese Style UMS Side Rail Assembly Instructions

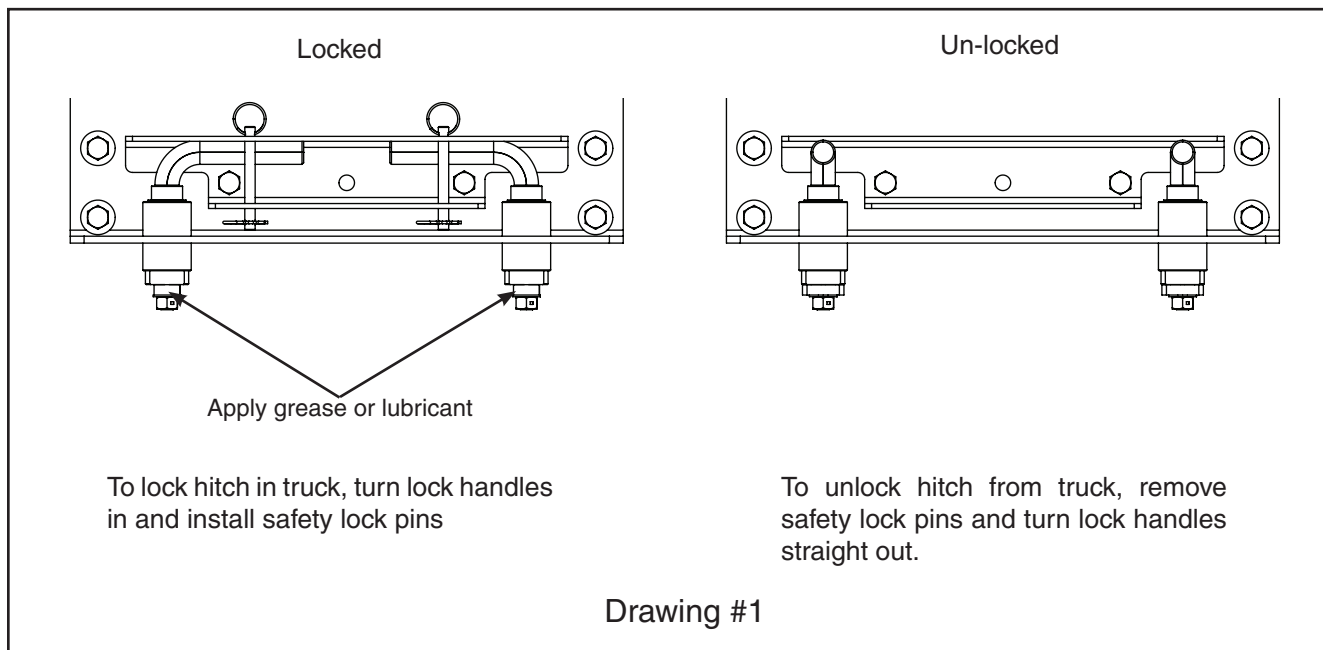
Hitch Assembly:

1. Loosely bolt the main AutoSlide assembly to the side rails using the 1/2" x 1 1/2" bolts, flat washers, and lock nuts provided in the side rail bolt package at the predetermined height using the bolt pattern guide in drawing #1. **NOTE: On highest setting, use 6 bolts. The 4 along the top row are to fasten to hitch assembly and the bottom 2 are to fasten the side rail brace to side rail to retain locking pins.**
2. Tighten all the bolts.
3. Unlock locking pins and insert the hitch assembly into the base rails and test for fit. If the pins are too narrow to drop in, follow the alignment procedure on page 3.
4. Proceed to base rail install procedure as provided in the base rail installation kit.



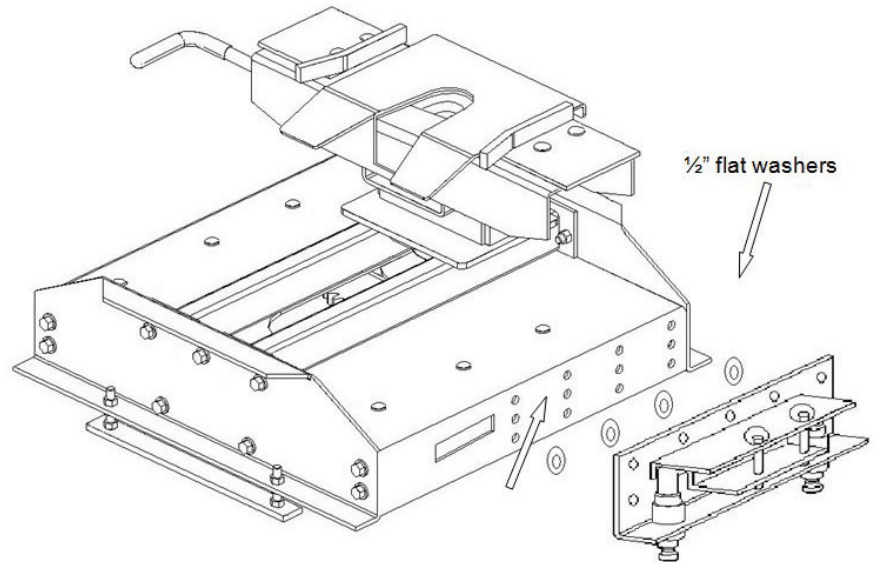
IMPORTANT NOTE: Incorrect mounting of the side plates to the main body will result in the incorrect position of the hitch for towing and will not allow the hitch to travel back to its full 14" ability.

IMPORTANT NOTE: Apply a little grease or lubricant to the part of the pins that insert into the base rails to help maintain smooth operation and rotation of pins and to protect from the elements. Turn the pins occasionally to prevent them from seizing.



Alignment Procedure:

If the side plate pins do not drop into the base rail holes because they are not out far enough, then undo one side and add a ½" flat washer in between the main frame and the side plate at each bolt attachment hole as shown in drawing below. Tighten and try reinstalling into the base rails. If necessary, do the same on the other side to shim out further if needed.

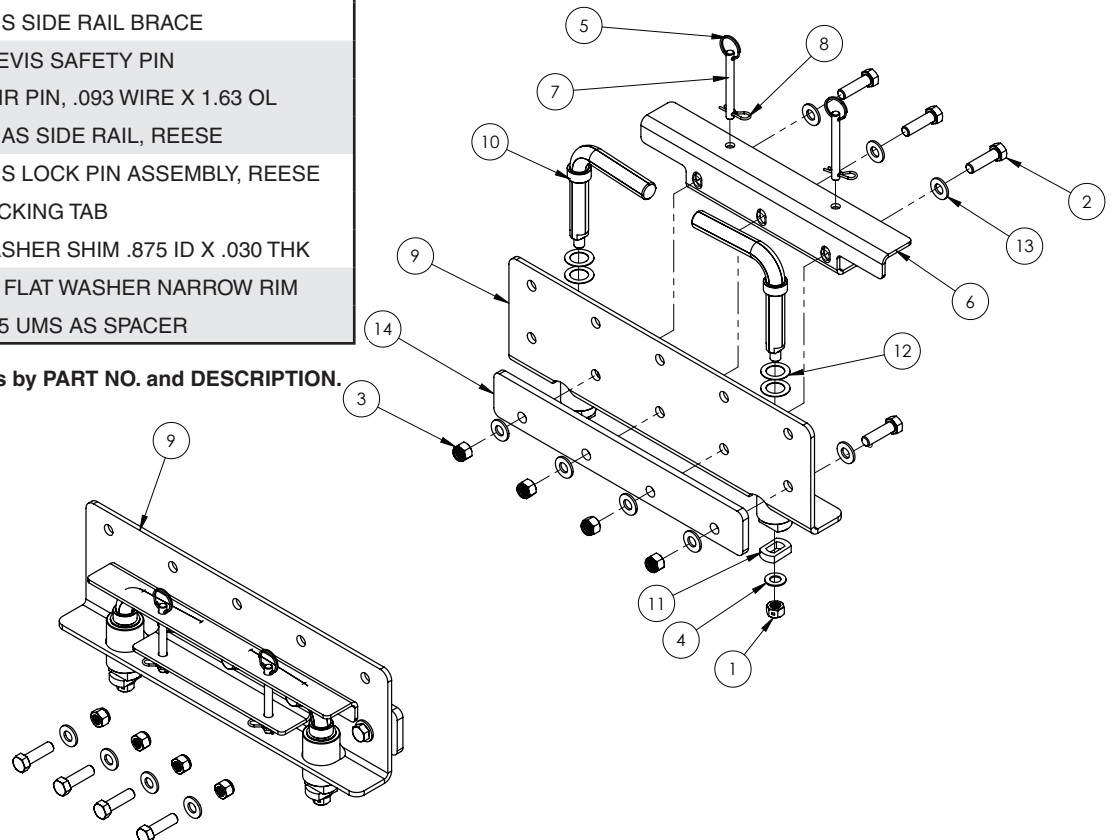


6033 Parts Breakdown

6033 Parts Breakdown

ITEM	PART #	QTY	DESCRIPTION
1	00173	4	NUT, HEX, .50NC CENTER PUNCH
2	00482	12	BOLT, .50 NC X 1.75 GR.5 HEX
3	02178	12	NUT, .50NC LOCK, NY. INSERT
4	02384	4	.50 X 14GA MACHINE WASHER
5	07225	4	SPLIT RING
6	14262-76	2	UMS SIDE RAIL BRACE
7	14342-95	4	CLEVIS SAFETY PIN
8	14350	4	HAIR PIN, .093 WIRE X 1.63 OL
9	14411-30	2	UMAS SIDE RAIL, REESE
10	14412-95	4	UMS LOCK PIN ASSEMBLY, REESE
11	14413-95	4	LOCKING TAB
12	14423	8	WASHER SHIM .875 ID X .030 THK
13	14488	20	.50 FLAT WASHER NARROW RIM
14	14763-76	2	.375 UMS AS SPACER

Please order replacement parts by **PART NO.** and **DESCRIPTION.**





P.O. BOX 189
4010 320th St., BOYDEN, IA. 51234
PH: (712) 725-2311
FAX: (712) 725-2380
TOLL FREE: 1-800-54DEMCO (1-800-543-3626)
www.towdemco.com