

# GIRARD - The Leader in Tankless Technology

**NEW!**



## New Digital User Control Panel (UCP)

- Water Temperature Settings (adjustable from 95° to 124°)
- Fahrenheit or Centigrade Selection
- Continuous Water Outlet Temperature Reading
- Fan Icon
- Water Flow Icon
- Flame Icon
- Error Codes for Easy Diagnostics

## Girard's GSWH-2

### On-Demand Tankless Water Heater with "State of the Art" Electronics and Components

**Endless Hot Water at a Competitive Price!**

#### On-Board Micro-Processor Monitors:

- Inlet Water Flow
- Inlet Water Temperature
- Outlet Water Temperature
- Regulates the burner to maintain the set **HOT** Water Temperature:
  - Now you can add COLD Water to the desired temperature
  - All the **HOT** Water you want when you want it!
- 42,000 BTUs which provides the optimum performance for an RV's plumbing
- No special LP gas lines or special plumbing required
- Quiet Brush-less Motor
- 12V power that operates at less than 3 AMPs
- Freeze Protection – Designed for Winter Use
- Designed Specifically for Recreational Vehicles
- Compact Design – Fits in any tank water heater cut-out opening



#### New Hinged Door Design

Easy Latch closing. No more twist latches!

#### Door Kits Available

For easy replacement of any tank water heater. See back side for further information.



ETL certified and approved for  
the U.S.A. and Canada.



**GIRARD PRODUCTS. LLC.**

[www.greenrvproducts.com](http://www.greenrvproducts.com)

**Girard Products LLC.**, 1361 Calle Avanzado, San Clemente, CA 92673  
Toll Free: 866.559.1221 • Local: 949.259.4024 • Fax: 949.276.5502



# ***GIRARD - The Leader in Tankless Technology***

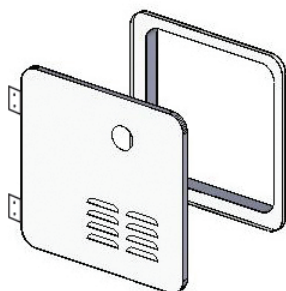
## **Four door kits for easy replacement of a tank water heater...**

### **DOOR/FLANGE ASSEMBLY**

**Part # 2GWHD**

**POLAR WHITE**

For new installations. Also applicable conversion door for the Suburban 6 gallon water heater.

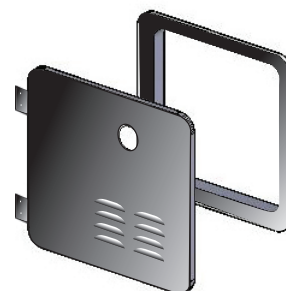


### **DOOR/FLANGE ASSEMBLY**

**Part # 2GWHDB**

**BLACK**

For new installations. Also applicable conversion door for the Suburban 6 gallon water heater.

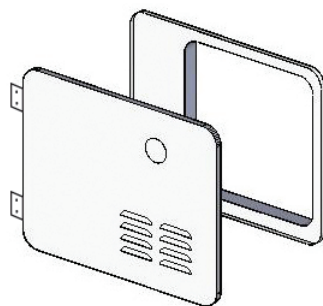


### **DOOR/FLANGE ASSEMBLY**

**Part # 2GWHDA6**

**POLAR WHITE**

Applicable conversion door for the Atwood 6 gallon water heater.



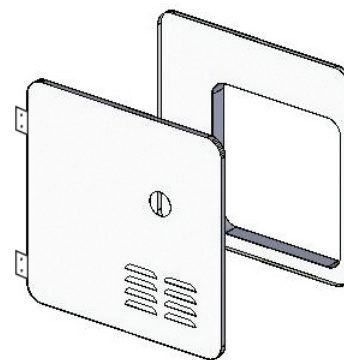
### **DOOR/FLANGE ASSEMBLY**

**CONVERSION**

**Part # 2GWHDas10 -**

**POLAR WHITE**

Applicable conversion door for the Atwood or Suburban 10 gallon water heater.



**The table below summarizes the main performance specifications of the Model GSWH-2**

BTU/HR	42,000 BTU
Fuel	Propane (LP Gas)
Inlet Pressure	11" WCI Min to 14" WCI Max
Manifold Pressure	1.5" - 7.2" WCI
Power Input	12VDC < 3 amp
Water Operating Pressure	125 PSI Max
Dimensions	Width: 12.5" • Height: 12.5" • Depth 15.5"
Shipping Weight	24 lbs.
ECO	Max Temperature 140° F



**GIRARD PRODUCTS. LLC.**

**Girard Products LLC.**, 1361 Calle Avanzado, San Clemente, CA 92673

Toll Free: 866.559.1221 • Local: 949.259.4024 • Fax: 949.276.5502

[www.greenrvproducts.com](http://www.greenrvproducts.com)



ETL certified and approved for  
the U.S.A. and Canada.