

# ***GIRARD - The Leader in Tankless Technology***

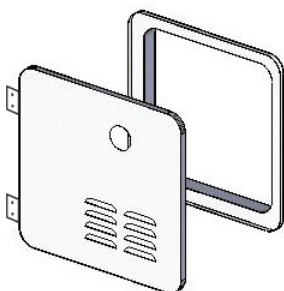
## **Four door kits for easy replacement of a tank water heater...**

### **DOOR/FLANGE ASSEMBLY**

**Part # 2GWHD**

**POLAR WHITE**

For new installations. Also applicable conversion door for the Suburban 6 gallon water heater.

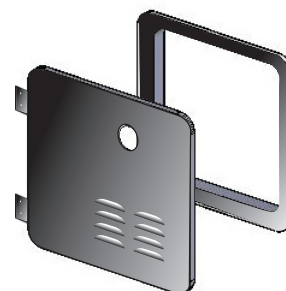


### **DOOR/FLANGE ASSEMBLY**

**Part # 2GWHDB**

**BLACK**

For new installations. Also applicable conversion door for the Suburban 6 gallon water heater.

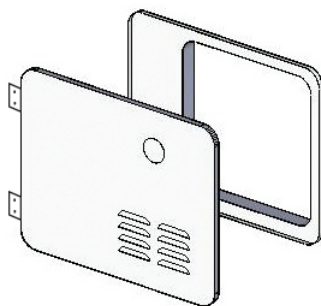


### **DOOR/FLANGE ASSEMBLY**

**Part # 2GWHDA6**

**POLAR WHITE**

Applicable conversion door for the Atwood 6 gallon water heater.



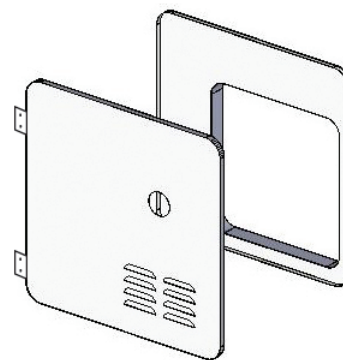
### **DOOR/FLANGE ASSEMBLY**

**CONVERSION**

**Part # 2GWHDAS10 -**

**POLAR WHITE**

Applicable conversion door for the Atwood or Suburban 10 gallon water heater.



**The table below summarizes the main performance specifications of the Model GSWH-2**

BTU/HR	42,000 BTU
Fuel	Propane (LP Gas)
Inlet Pressure	11" WCI Min to 14" WCI Max
Manifold Pressure	1.5" - 7.2" WCI
Power Input	12VDC < 3 amp
Water Operating Pressure	125 PSI Max
Dimensions	Width: 12.5" • Height: 12.5" • Depth 15.5"
Shipping Weight	24 lbs.
ECO	Max Temperature 140° F



**GIRARD PRODUCTS. LLC.**



ETL certified and approved for the U.S.A. and Canada.

**Girard Products LLC.**, 1361 Calle Avanzado, San Clemente, CA 92673

Toll Free: 866.559.1221 • Local: 949.259.4024 • Fax: 949.276.5502

**[www.greenrvproducts.com](http://www.greenrvproducts.com)**