
Introduction

Thank you for purchasing this automatic load shed manufactured with pride by Parallax Power Supply

We are confident that it will give you outstanding performance for many years. If you have any questions or comments about this product, please contact a Parallax Power Supply customer service representative at the address or phone number listed below.

Parallax Power Supply
100 West 11th Street Suite 100
Anderson, IN 46016
Ph. 1-800-443-4859
FAX: 1-765-608-5235

General Information

The ALS 20 automatic load shed is designed to automatically switch off a secondary load in a high current situation. This allows for the connection of two high current devices to a single 20 amp breaker. Often the job of the ALS 20 has been performed by a manual device selector switch.

Typically the ALS 20 will be configured so that when the on demand current is at a very high level the ALS 20 will automatically shed, or disconnect a secondary load such as a water heater whose operation can be temporarily postponed without directly affecting the user. This situation would normally occur by activating a high current on-demand device such as a microwave or hair dryer. In addition the ALS 20 may also be installed to allow for the operation of more than 2 thermostatically controlled devices on a 120V 30AMP service, as per the NEC 551-42(c). After the current demands drop on the circuit, and a short safety delay the ALS 20 will automatically switch the disconnected load back on.

Operation

After the **ALS 20** unit is installed, using one of the typical installations shown in this manual, it will be ready for years of trouble free service. Operation is automatic and no maintenance is required.

Mounting Locations

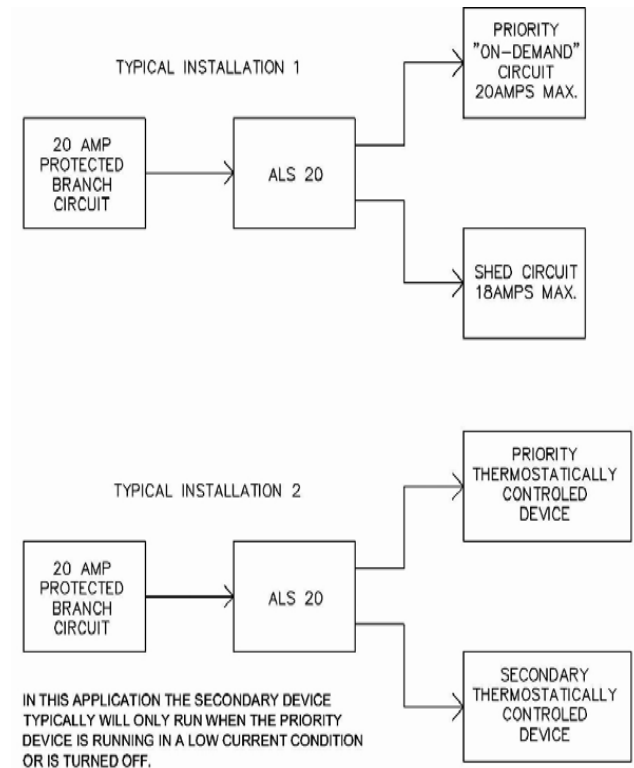
The **ALS 20** is not ignition protected; therefore, it should not be mounted in the same compartment as batteries or other flammable materials such as gasoline.

The **ALS 20** may be mounted in any position, leaving room for routing input and load conductors.

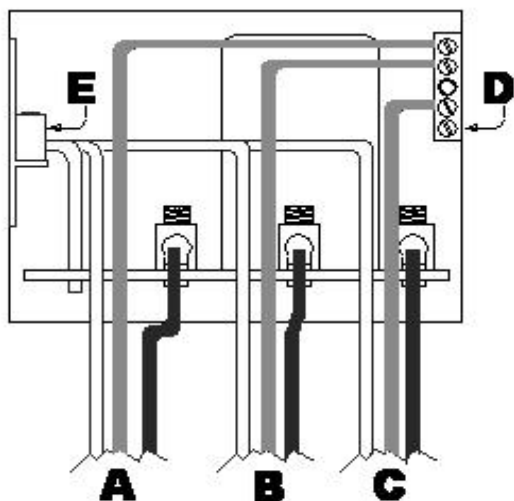
The **ALS 20** series unit may be mounted in the cabin/living area or a basement compartment, but is not suitable for outside locations.

Mounting the **ALS 20** should be accomplished by using fasteners appropriate for the mounting surface. 4 fasteners are required for the 4 holes provided in the mounting flanges.

Typical Installations



Wiring Instructions



WIRING
COLOR
CODE

NEUTRAL (WHT)
GROUND (GREEN / BARE)
LINE (BLK)

A - 120VAC 20AMP MAX. PROTECTED
BRANCH CIRCUIT

B - PRIORITY LOAD: 120VAC 20AMPS MAX.

C - SHED LOAD: 120VAC 18AMPS MAX.

D - BONDED EQUIPMENT GND.
CU 8-12; COPPER WIRE ONLY.

E - ISOLATED NEUTRAL BAR.
CU 10-12; COPPER WIRE ONLY.

TERMINAL TORQUE RATINGS:
AWG CU INCH-POUNDS
10-12 35
8 40

CAUTION:

Observe the polarity and torque specifications per the installation label included on the inside cover of each unit.

All ALS models should be installed by a qualified electrician.

Specifications

*SPECIFICATIONS SUBJECT TO CHANGE
WITHOUT PRIOR NOTICE.*

ALS 20

Electrical rating: 120 volt, 20 amps.

Relay: DPDT rated 30 amps

Coil: 110 volts DC

Input: 120VAC 20 amp protected branch circuit.

Priority load circuit: 120VAC 20 amps MAX.

Shed load circuit: 120VAC 18 amps MAX.

ETL Listed for Canada and USA

Dimensions: **ALS 20:**

4.75" wide, 4.125" tall, 6.250" long

Mtg. Baseplate – 6.25 long, 6.00 wide

Weight: 3.75 pounds (all models)

Not ignition protected

Warranty Statement

Parallax Power Supply warrants each ALS to be free from defects in materials or workmanship under normal use and service and limits the remedies to repair or replacement.

This warranty extends for two years from the date of purchase and is only valid to the original owner and within the continental limits of the United States and Canada.

If a problem should occur with your ALS within the first 24 months of purchase, please contact a dealer that handles warranty on your brand of boat or RV.
No user serviceable parts inside.

This warranty does not cover damage due to improper installation, abuse or accidents.

You may download the **Parallax Power Supply Warranty Policy** at:

<http://www.parallaxpower.com/warranty.htm>



A Division of Connecticut Electric, Inc.

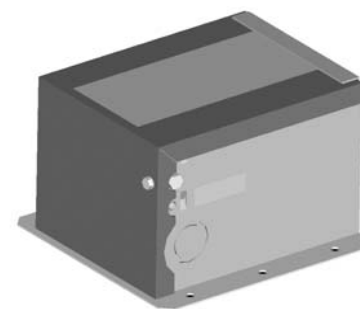
100 West 11th Street Suite 100

Anderson, IN 46016

ALS 20

**20 AMP
Automatic
Load Shed**

Owners' Manual



ALS 20



Listed for RV Use in the U.S.A. and Canada.