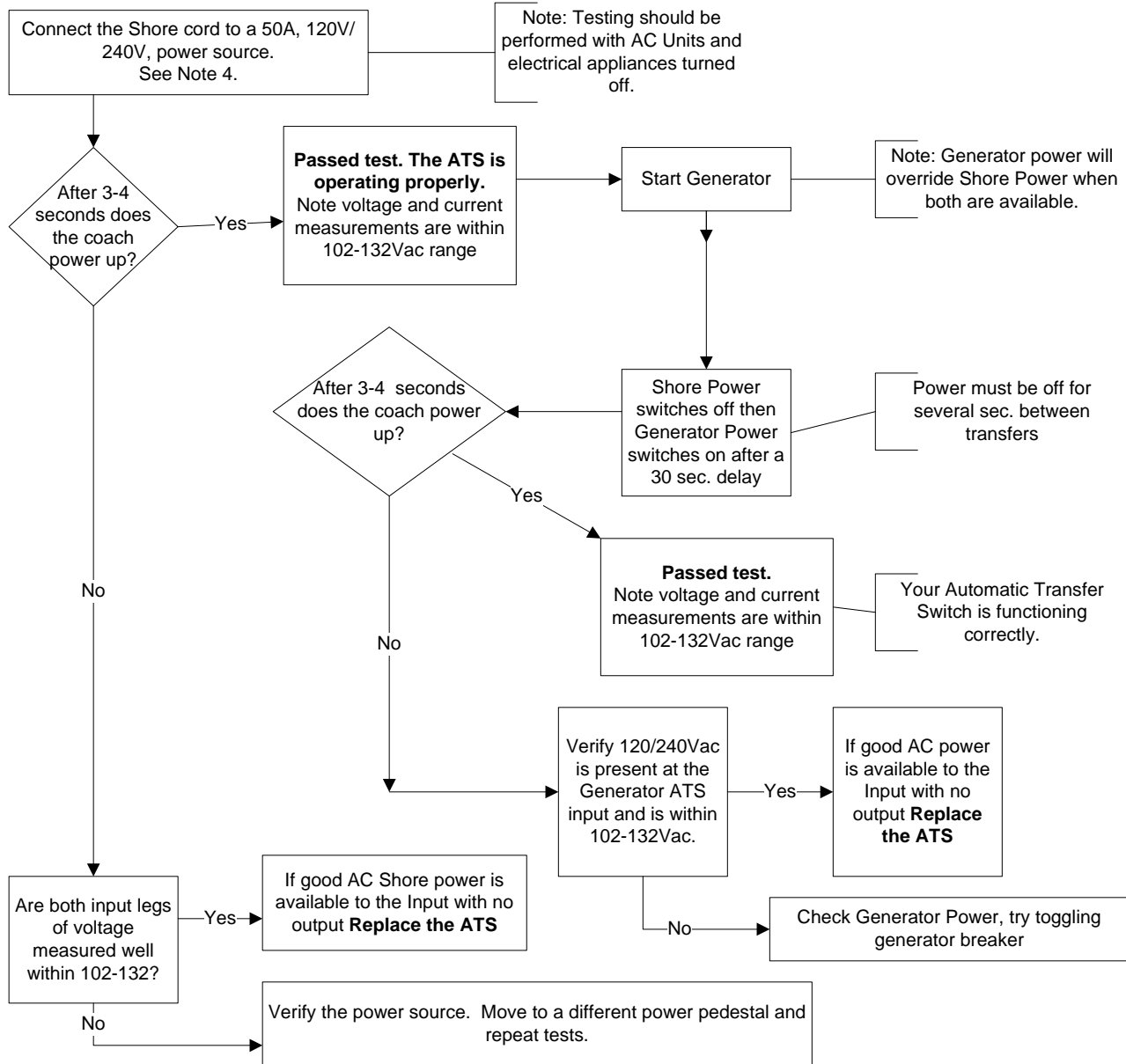


Surge Guard ATS Troubleshooting Guide

P/N 41260



1. Line1, Line2 or Neutral open - Check all input wiring to the ATS. Check Shr cord. Check wiring on Generator. Replace Receptacle on pedestal. Replace adapter if reducing down to 120V,30A service.

2. Reverse Polarity - Check wiring at pedestal. In generator mode, have generator serviced. Do not run.

3. Check Surge - Fuses inside unit have opened. Return ATS to TRC for service. The ATS may be used until service can be arranged.

4. Note: The Surge Guard ATS will also operate properly using a suitable 120V, 30A adapter.

For additional technical support call 800-780-4324 ext 311